

THIS DRAWING IS UNPUBLISHED. RELEASED FOR PUBLICATION  
 © COPYRIGHT BY TYCO ELECTRONICS CORPORATION. ALL RIGHTS RESERVED.

LOC	DIST	REVISIONS					
FT	0	P	LTR	DESCRIPTION	DATE	DWN	APVD
			J	REVISED PER 0G3B-1157-04	12/8/04	SS	SRY

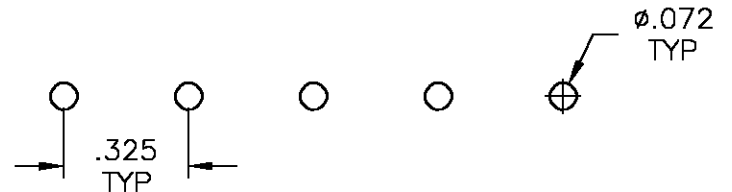
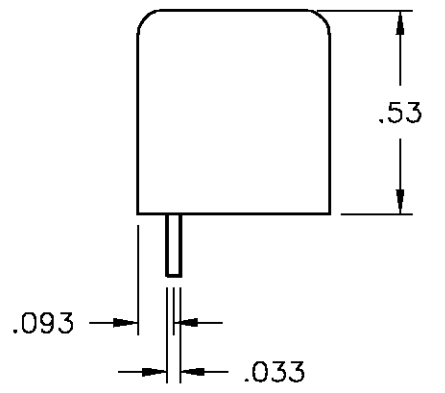
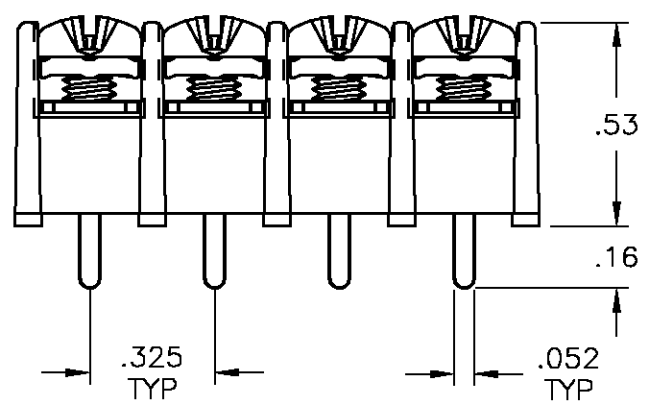
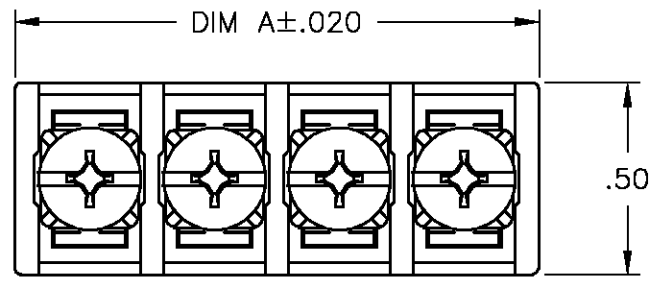
NOTES:

**MATERIAL:**  
 HOUSING: THERMOPLASTIC PA, UL94V-0, BLACK.  
 TERMINAL: BRIGHT TIN PLATED, COPPER ALLOY.  
 SCREW: 6-32, STEEL, ZINC PLATED CLEAR CHROMATE.

**ELECTRICAL:**  
 UL/CSA:  
 CLASS B: 25A, 300V.  
 CLASS C: 20A, 150V  
 CLASS D: 10A, 300V  
 WIRE RANGE: 12-22 AWG

**MECHANICAL:**  
 MAXIMUM TORQUE RATING: 7 IN-LBS.  
 RUNNING TORQUE: 0.5-3.5 IN-LBS UNLESS OTHERWISE STATED.

- ▲ SCREWS ARE BOTTOMED, NO THREAD INTERRUPT.
- ▲ SCREWS ARE NICKEL PLATED BRASS.
- ▲ SCREWS ARE CAPTIVE.
- ▲ PRELIMINARY PART NUMBER.



RECOMMENDED PCB LAYOUT

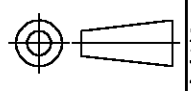
CATALOG NUMBER	DIM A	NO OF POSN	PART NUMBER
4DB-P108-20	6.565	20	4-1437667-6
4DB-P108-19	6.240	19	4-1437667-5
4DB-P108-18	5.915	18	4-1437667-4
4DB-P108-17	5.590	17	4-1437667-2
4DB-P108-16	5.265	16	4-1437667-0
4DB-P108-15	4.940	15	3-1437667-9
4DB-P108-14	4.615	14	3-1437667-8
4DB-P108-13	4.290	13	3-1437667-7
4DB-P108-12	3.965	12	3-1437667-6
4DB-P108-11	3.640	11	3-1437667-5
4DB-P108-10	3.315	10	3-1437667-3
▲ 4DB-P106-09-094	2.990	9	1-796658-7
4DB-P108-09	2.990	9	3-1437667-2
▲ 4DB-P108-08-091	2.665	8	1-796658-4
4DB-P108-08	2.665	8	3-1437667-1
▲ 4DB-P106-07-100	2.340	7	2-796658-2
▲ 4DB-P106-07-093	2.340	7	1-796658-6
4DB-P108-07	2.340	7	3-1437667-0
▲ 4DB-P106-06-099	2.015	6	2-796658-1
▲ 4DB-P108-06-090	2.015	6	1-796658-3
4DB-P108-06	2.015	6	2-1437667-9
▲ 4DB-P106-05-098	1.690	5	2-796658-0
▲ 4DB-P108-05-093	1.690	5	1-796658-5
4DB-P108-05	1.690	5	2-1437667-8
▲ 4DB-P106-04-097	1.365	4	1-796658-9
▲ 4DB-P108-04-089	1.365	4	1-796658-2
4DB-P108-04	1.365	4	2-1437667-6
▲ 4DB-P106-03-096	1.040	3	1-796658-8
▲ 4DB-P108-03-088	1.040	3	1-796658-1
4DB-P108-03	1.040	3	2-1437667-5
4DB-P108-02	.715	2	2-1437667-4

THIS DRAWING IS A CONTROLLED DOCUMENT.		DWN S WELDON 01MAY2003	Tyco Electronics Corporation Harrisburg, Pa 17105-3608	
DIMENSIONS: INCHES		CHK S YODER 5/1/03		
TOLERANCES UNLESS OTHERWISE SPECIFIED:		APVD S YODER 5/1/03	NAME ASSEMBLY, DUAL BARRIER 4DB-P108-XX	
0 PLC ± - 1 PLC ± - 2 PLC ± .01 3 PLC ± .005 4 PLC ± - ANGLES ± 1°		PRODUCT SPEC	RESTRICTED TO	
MATERIAL		APPLICATION SPEC	SIZE A3	CAGE CODE 00779
FINISH		WEIGHT	DRAWING NO C-2-1437667-4	
		CUSTOMER DRAWING	SCALE NTS	SHEET 1 OF 2
			REV J	

THIS DRAWING IS UNPUBLISHED. RELEASED FOR PUBLICATION  
 © COPYRIGHT BY TYCO ELECTRONICS CORPORATION. ALL RIGHTS RESERVED.

LOC	DIST	REVISIONS			
P	LTR	DESCRIPTION	DATE	DWN	APVD
FT	0	—	—	—	—
		SEE SHEET 1	—	—	—

CATALOG NUMBER	DIM A	NO OF POSN	PART NUMBER
4DB-P108-30	9.815	30	5-1437667-5
4DB-P108-29	9.490	29	796658-9
4DB-P108-28	9.165	28	5-1437667-3
4DB-P108-27	8.840	27	796658-8
4DB-P108-26	8.515	26	5-1437667-2
4DB-P108-25	8.190	25	796658-7
4DB-P108-24	7.865	24	5-1437667-0
4DB-P108-23	7.540	23	796658-6
4DB-P108-22	7.215	22	4-1437667-8
4DB-P108-21	6.890	21	796658-2

THIS DRAWING IS A CONTROLLED DOCUMENT.		DWN S WELDON	01MAY2003	<b>tyco</b> Tyco Electronics Corporation	
DIMENSIONS: INCHES		CHK S YODER	5/1/03	Harrisburg, Pa 17105-3608	
TOLERANCES UNLESS OTHERWISE SPECIFIED:		APVD S YODER	5/1/03	NAME ASSEMBLY, DUAL BARRIER	
		PRODUCT SPEC	4DB-P108-XX		
0 PLC ± - 1 PLC ± - 2 PLC ± .01 3 PLC ± .005 4 PLC ± - ANGLES ± 1'		APPLICATION SPEC	-		
MATERIAL	FINISH	WEIGHT	SIZE	CAGE CODE	DRAWING NO
-	-	-	A3	00779	C-2-1437667-4
CUSTOMER DRAWING				RESTRICTED TO	-
SCALE			SHEET	OF	REV
NTS			2	2	J