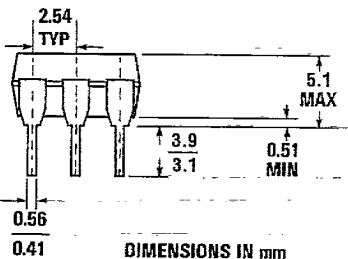
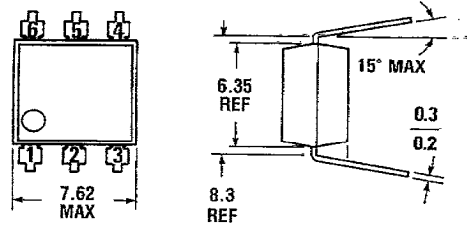


PACKAGE DIMENSIONS



DIMENSIONS IN mm
PACKAGE CODE E

ST1603

DESCRIPTION

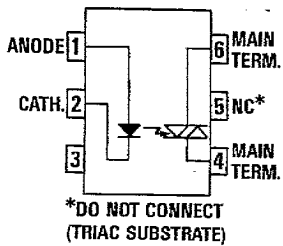
The MOC3020, MOC3021, MOC3022 and MOC3023 are optically isolated triac driver devices. These devices contain a GaAs infrared emitting diode and a light activated silicon bilateral switch, which functions like a triac. This is designed for interfacing between electronic controls and power triacs to control resistive and inductive loads for 240 VAC operations.

FEATURES

- Excellent I_{FT} stability—IR emitting diode has low degradation
- High isolation voltage—minimum 7500 VAC peak
- Underwriters Laboratory (UL) recognized—File #E90700

APPLICATIONS

- European applications for 240 VAC
- Triac driver
- Industrial controls
- Traffic lights
- Vending machines
- Motor control
- Solid state relay



Equivalent Circuit

ABSOLUTE MAXIMUM RATINGS

TOTAL PACKAGE		INPUT DIODE	
Storage temperature	-55°C to 150°C	Forward DC current	50 mA
Operating temperature	-40°C to 100°C	Reverse voltage	3 V
Lead temperature		Peak forward current	
(soldering, 10 sec)	260°C	(1 μ s pulse, 300 pps)	3.0 A
		Power dissipation (25°C ambient)	100 mW
		Derate linearly (above 25°C ambient)	1.33 mW/°C
		OUTPUT DRIVER	
		Off-state output terminal voltage	400 Volts
		On-state RMS current	$T_A=25^\circ\text{C}$ 100 mA
		(Full cycle, 50 to 60 Hz)	$T_A=70^\circ\text{C}$ 50 mA
		Peak nonrepetitive surge current	1.2 A
		(PW=10 ms, DC=10%)	
		Total power dissipation (25°C ambient)	300 mW
		Derate above 25°C	4.0 mW/°C

MOC3020 MOC3021 MOC3022 MOC3023

ELECTRO-OPTICAL CHARACTERISTICS (25°C Temperature Unless Otherwise Specified)

INDIVIDUAL COMPONENT CHARACTERISTICS

CHARACTERISTIC	SYMBOL	MIN.	TYR.	MAX.	UNITS	TEST CONDITIONS
INPUT DIODE						
Forward voltage	V_F		1.2	1.50	V	$I_F=10$ mA
Junction capacitance	C_J		50		pF	$V_F=0$ V, $f=1$ MHz
Reverse leakage current	I_R			100	μ A	$V_R=3.0$ V
OUTPUT DETECTOR						
Peak blocking current, either direction	I_{BRM}	—	10	100	nA	$V_{BRM}=400$ V, Note 1
Peak on-state voltage, either direction	V_{TM}	—	2.5	3.0	Volts	$I_{TM}=100$ mA Peak

Note 1. Test voltage must be applied within dv/dt rating.

TRANSFER CHARACTERISTICS

DC CHARACTERISTICS	SYMBOL	MIN.	TYR.	MAX.	UNITS	TEST CONDITIONS
LED trigger current (current required to latch output)	MOC3020	I_{FT}	—	30	mA	Main terminal voltage=3.0 V, $R_L=150\Omega$
	MOC3021	I_{FT}	—	15	mA	
	MOC3022	I_{FT}	—	10	mA	
	MOC3023	I_{FT}	—	5	mA	
Holding current	I_H	—	100	—	μ A	Either direction

TRANSFER CHARACTERISTICS

CHARACTERISTICS	SYMBOL	MIN.	TYR.	MAX.	UNITS	TEST CONDITIONS
dv/dt RATING						
Critical rate of rise of off-state voltage	dv/dt	—	12	—	V/ μ s	Static dv/dt, $T_A=85^\circ$ C (see Fig. 3)
Critical rate of rise of commutating voltage	dv/dt	—	0.2	—	V/ μ s	Commutating dv/dt $I_{LOAD}=15$ mA (see Fig. 4)

ISOLATION CHARACTERISTICS

CHARACTERISTICS	SYMBOL	MIN.	TYR.	MAX.	UNITS	TEST CONDITIONS
Isolation voltage	V_{ISO}	5300			V_{AC} RMS	$I_{tO} < 1$ μ A, 1 Minute
	V_{ISO}	7500			V_{AC} PEAK	$I_{tO} < 1$ μ A, 1 Minute
Isolation resistance	R_{ISO}	10^{11}			ohms	$V_{tO}=500$ VDC
Isolation capacitance	C_{ISO}		0.5		pF	$f=1$ MHz

Note 1: Ratings apply to either polarity of pin 6 — referenced to pin 4. Voltages must be applied within dv/dt rating.

MOC3020 MOC3021 MOC3022 MOC3023

TYPICAL ELECTRICAL CHARACTERISTIC CURVES

(25°C Free Air Temperature Unless Otherwise Specified)

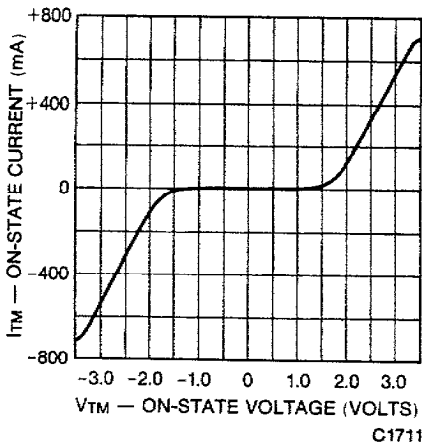


Fig. 1. On-State Characteristics

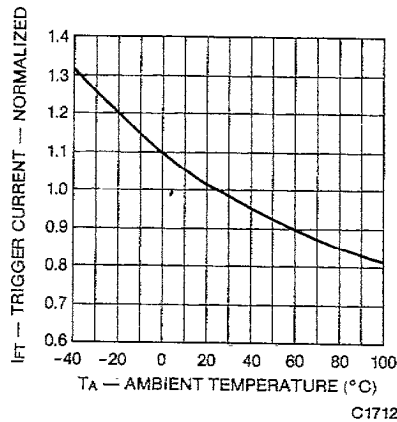
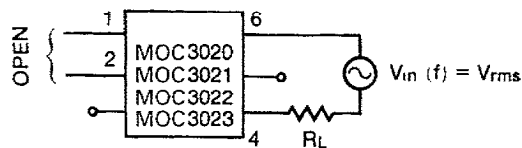


Fig. 2. Trigger Current vs. Temperature

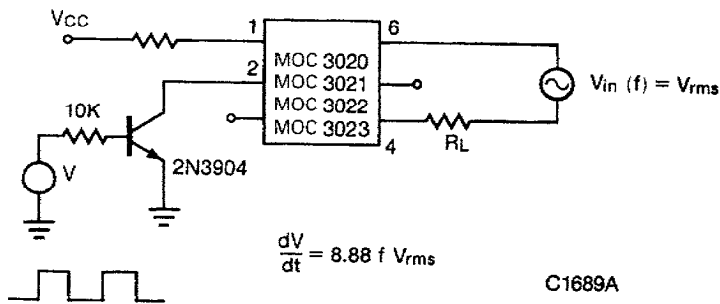
TEST CIRCUITS FOR dV/dt MEASUREMENTS



$$\frac{dV}{dt} = \omega V_{\text{pack}} = 2\pi f \times 1.414 V_{\text{rms}}$$

$$= 8.88 f V_{\text{rms}}$$

Fig. 3. Static dV/dt



$$\frac{dV}{dt} = 8.88 f V_{\text{rms}}$$

Fig. 4. Commutating dV/dt

MOC3020 MOC3021 MOC3022 MOC3023