

ITEM	DESCRIPTION	Q' TY	MATERIAL	TREATMENT	REMARK
1	HOUSING	1	THERMOPLASTIC, GLASS FILLED POLYESTER, UL94V-0. (SEE BELOW)	SEE REMARK	
2	CONTACT	SAME AS NO. OF POSITIONS (SEE BELOW)	PHOSPHOR BRONZE	30u"~50u" NICKEL SOLDER PLATING, CONTACT AND TAIL AREA PLATING SEE BELOW	

REMARK:

PROD. NO.: P A 2 1 0 - -

SERIES PREFIX

OPEN FRAME CONSTRUCTION
(2.54mm OR 1.27mm)

EXTENSION CODE SEE REMARK 1A

TERMINATION & CONTACT TYPE
(SURFACE MOUNT & J LEAD)

CONTACT & TAIL AREA PLATING THICKNESS
0= 150u" MIN. TIN/LEAD PLATING

NO. OF

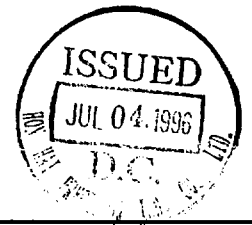
CONTACT POSITION

21= 42 POS. (21 POS. x 2 SIDES)

20= 40 POS. (20 POS. x 2 SIDES)

1A. EXTENSION CODE (MATERIAL COLOR, APPLIED TO CHIP WIDTH & PACKING RULES)

CODE	MATERIAL COLOR	APPLIED TO CHIP WIDTH	PACKING
P1	BLACK	0.4"	TUBE
P2	BLACK	0.4"	TAPE & REEL
P1-C	BROWN	0.4"	TUBE
P2-C	BROWN	0.4"	TAPE & REEL



E	HC95 1594	<i>Leachin</i>
D	HC95915	L.C
C	HC95381	S.LU
B	HC94956	JEFF
A	DWG. REL	JEFF
REV.	ECN. NO.	APPD.

FOXCONN HON HAI PRECISION INDUSTRY CO., LTD
TAIPEI TAIWAN R.O.C

TITLE: MATERIAL CHART
SOJ SOCKET

APPD.: *Michael Wang*
CHKD.: *Michael Wang*
DR.: *Rita Wang*
REV.: E SHEET: 1 OF 4

PROD. NO.: PA21 SERIES
DWG. NO.: 309-0000-435

REMARK:

PROD. NO.: P A 2 1 0 - -

EXTENSION CODE SEE REMARK 2A

CONTACT & TAIL AREA PLATING THICKNESS
0= 150u" MIN. TIN/LEAD PLATING

NO. OF

CONTACT POSITION

16= 32 POS. (16 POS. x 2 SIDES)

14= 28 POS. (14 POS. x 2 SIDES)

2A. EXTENSION CODE (MATERIAL COLOR, APPLIED TO CHIP WIDTH & PACKING RULES)

CODE	MATERIAL COLOR	APPLIED TO CHIP WIDTH	PACKING
P3	BLACK	0.3"	TUBE
P4	BLACK	0.3"	TAPE & REEL
P3-C	BROWN	0.3"	TUBE
P4-C	BROWN	0.3"	TAPE & REEL



FOXCONN HON HAI PRECISION INDUSTRY CO., LTD
TAIPEI TAIWAN R.O.C

TITLE: MATERIAL CHART
SOJ SOCKET

APPD.: *[Signature]* 11/9/95

CHKD.: *[Signature]* 11/9/95

PROD. NO.: PA21 SERIES

DR.: *Rita Wang* 11/9/95

DWG. NO.: 309-0000-435

REV.: E SHEET: 2 OF 4

REV.	ECN.	NO.	APPD.
C	HC95114	SLU	SLU
D	HC95813	SLU	SLU
E	HC95913	Leo	Leo
F	HC951254	SLU	SLU
G	HC951341	SLU	SLU
H	HC951527	K.P.	K.P.
J	HC951592	SLU	SLU
K	HC951819	SLU	SLU
L	HC96446	SLU	SLU
M	HC96579	SLU	SLU

NOTES:

△ MATERIAL: PHOSPHOR BRONZE CONTACTS; THERMOPLASTIC, UL-94V-0 HOUSING; BLACK; BROWN COLOR.

2: ALL DIMENSIONS ARE IN MILLIMETERS.

△ THE POSITION NO. IS LOCATED APPROXIMATELY AS SHOWN.

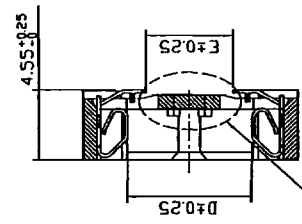
△ THE LOCATION *40P* IS FOR 0.4" SOJ SOCKET. THE LOCATION *32P* IS FOR 0.3" SOJ SOCKET 28P OR 32P.

△ PRODUCT NO. IS SPECIFIED AS BELOW:

PA21140-P1-M

ND. OF CONTACT POSITIONS PER ROW
 COLOR VERSION:
 NDINE: BLACK
 C: BROWN

* PACKAGE	APPLIED TO CHIP BODY WIDTH
1 TUBE	0.400"
2 TAPE & REEL	0.400"
3 TUBE	0.300"
4 TAPE & REEL	0.300"

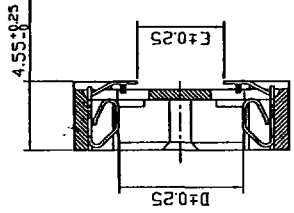


APPLIED TO 40 POS. ONLY

SECTION M-M

SCALE 4:1

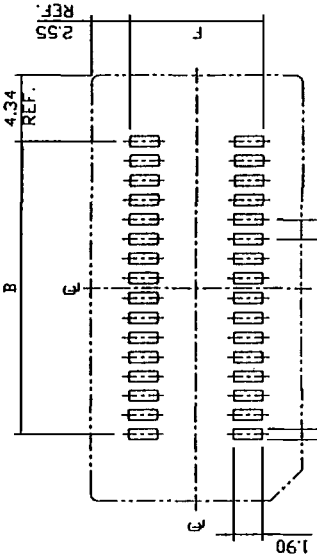
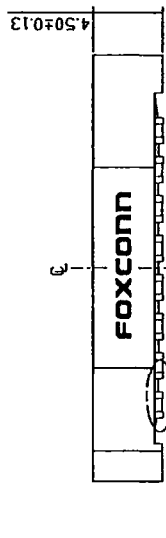
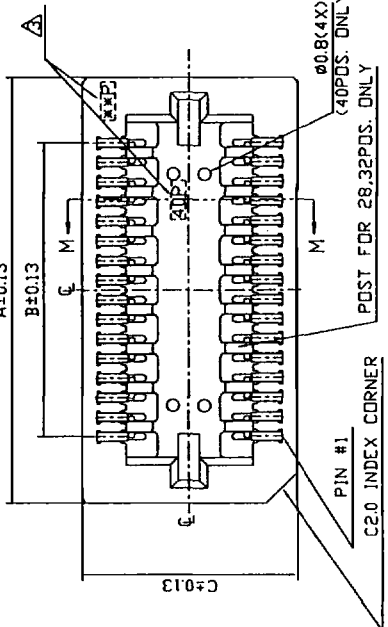
(FOR 40POS. ONLY)



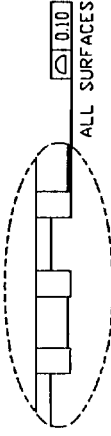
SECTION M-M

SCALE 4:1

(FOR 28,32POS. ONLY)

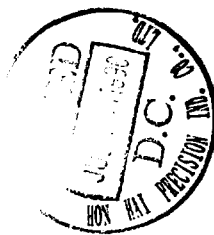


RECOMMENDED P.C.B. LAYOUT



DETAIL E

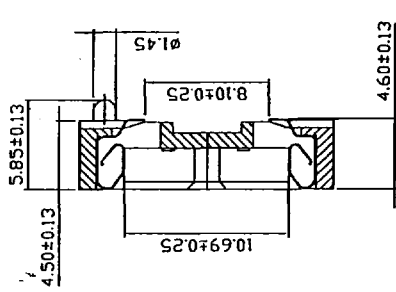
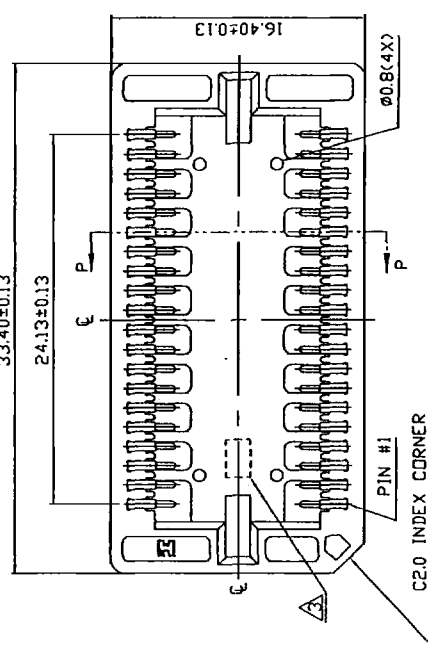
SCALE 16:1



SEE NOTE △

PRODUCT NO.	NO. OF POS.	DIM. A	DIM. B	DIM. C	DIM. D	DIM. E	DIM. F
PA21210-P1	21/42	34.07	25.40	16.40	10.50	8.05	11.30
PA21200-P1	20/40	32.80	24.13	13.86	7.96	5.51	8.76
PA21160-P3	16/32	27.72	19.05	13.86	7.96	5.51	8.76
PA21140-P4	14/28	25.18	16.51	13.86	7.96	5.51	8.76

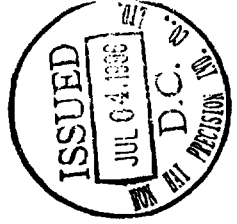
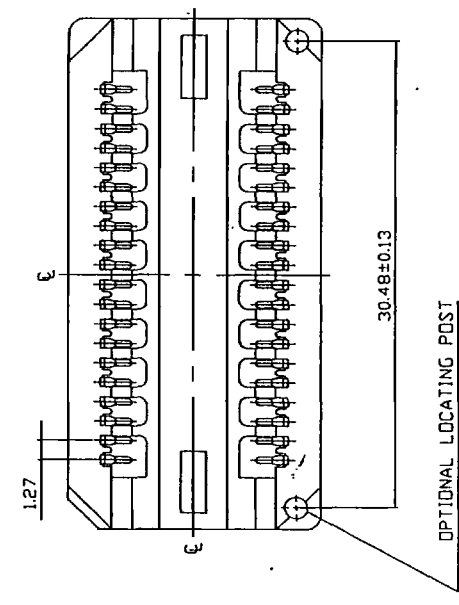
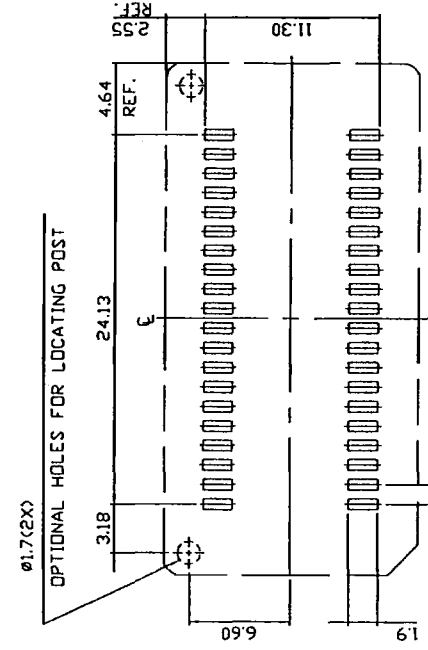
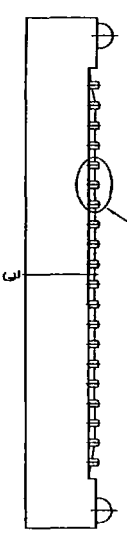
UNITS	MM
NAME (INTENDED USE)	SDJ SOCKET
PART NO. (INTENDED USE)	PA21140-P1-M
FINISH	
APPR.	DATE: 4/9/96
CHK'D	DATE: 4/11/96
DR.	DATE: 4/11/96
FOXCORN	HON HAI PRECISION IND. CO., LTD. TAIPEI, TAIWAN, R.O.C.
TITLE:	CUSTOMER DWG.
DWG NO.:	309-0000-048
SCALE	SHEET 1/2 M



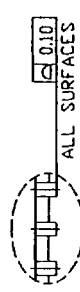
NOTES:
 △ MATERIAL: PHOSPHOR BRONZE CONTACTS; THERMOPLASTIC, UL94V-0 HOUSING.
 2. ALL DIMENSIONS ARE IN MILLIMETERS.
 △ THE POSITION NO. IS LOCATED APPROXIMATELY AS SHOWN.
 △ PRODUCT NO. IS SPECIFIED AS BELOW:
 PA21200-S-K-K

NO. OF CONTACT POSITIONS PER ROW
 K : V/D POST
 KI : V/ POST

* PACKAGE	APPLIED TO CHIP BODY WIDTH
1 TUBE	0.400"
2 TAPE & REEL	



RECOMMENDED P.C.B LAYOUT



DETAIL Q

K ±		UNITS MM	NAME (INTENDED USE)	FOXCONN
X ±		MATL	SOJ SOCKET	HON HAI PRECISION IND. CO., LTD.
XX ±		FINISH	PART NO. (INTENDED USE)	TAIPEI, TAIWAN, R.O.C.
XXX ±		QTY	PA21200-S-K-K	TITLE: CUSTOMER DWG.
XXXX ±			APPD: [Signature]	DWG NO: 309-0000-048
<small>THE DIMENSIONS AND TOLERANCES SHOWN ON THIS DRAWING ARE THE PROPERTY OF HON HAI PRECISION IND. CO., LTD. IT IS THE BUYER'S RESPONSIBILITY TO CHECK THE DIMENSIONS AND TOLERANCES OF THE PARTS AGAINST THE DRAWING AND TO HOLD THE MANUFACTURER HARMLESS AND THE COMPANY OF HON HAI PRECISION IND. CO., LTD.</small>				SCALE SHEET REV. N/A 2/2 M

SPECIFICATIONS :

1. PHYSICAL:

- 1-1 HOUSING : THERMOPLASTIC, GLASS FILLED POLYESTER, UL94V-0.
- 1-2 CONTACT : PHOSPHOR BRONZE.

2. ELECTRICAL CHARACTERISTICS:

- 2-1 CONTACT CURRENT RATING : 1 AMPERE.
- 2-2 RATED VOLTAGE : 250 VAC
- 2-3 CONTACT RESISTANCE : Δ R10 MILLIOHMS MAX. (AFTER TEST)
- 2-4 DIELECTRIC WITHSTANDING VOLTAGE : 750 VAC.
- 2-5 INSULATION RESISTANCE : 1000 MEGAOHMS MIN. (AFTER TEST)
- 2-6 CAPACITANCE : 1 PICOFARAD MAX. AT 1 MHZ BETWEEN RANDOMLY ADJACENT CONTACTS.

3. MECHANICAL CHARACTERISTICS:

- 3-1 CONTACT RETENTION FORCE : 340 GRAMS MIN.
- 3-2 DURABILITY : NO PHYSICAL DAMAGE AFTER 25 MATING CYCLES.

4. ENVIRONMENTAL DATA :

- 4-1 VIBRATION : TESTED IN ACCORDANCE WITH CONDITION III OF EIA RS-364-28A.
THERE SHALL BE NO DISCONTINUITIES GREATER THAN 1 MICROSECOND AND NO PHYSICAL DAMAGE.
- 4-2 MECHANICAL SHOCK : TESTED IN ACCORDANCE WITH CONDITION A OF EIA RS-364-27A.
THERE SHALL BE NO DISCONTINUITIES GREATER THAN 1 MICROSECOND AND NO PHYSICAL DAMAGE.
- 4-3 THERMAL SHOCK : TESTED IN ACCORDANCE WITH METHOD EIA RS-364-32A, CONDITION II.
- 4-4 HUMIDITY : TESTED IN ACCORDANCE WITH METHOD 1002.2 OF MIL-STD-1344A, TYPE I, CONDITION B.
- 4-5 SOLDERABILITY : TESTED IN ACCORDANCE WITH METHOD 208F OF MIL-STD-202F, SOLDER LEG AREA SHALL HAVE A SOLDER COVERAGE OF 95% MIN.
- 4-6 OPERATION TEMPERATURE : -55° C TO + 105° C.



FOXCONN HON HAI PRECISION INDUSTRY CO., LTD. TAIPEI TAIWAN R.O.C	
TITLE: SOJ. SOCKET, SMT TYPE	APPD.: <i>[Signature]</i> 6/6/95 CHKD.: <i>[Signature]</i> 6/6/95
PROD. NO.: PA21 <input type="checkbox"/> <input type="checkbox"/> <input type="checkbox"/>	DR. : <i>Rita Wang</i> 6/5/95
DWG. NO. : 309-0300-008	REV. : B SHEET: 1 OF 1

B	HC95914	<i>L.C</i> 6/6/95
A	DWG. REL.	<i>Jeff</i> 1/12/94
REV.	ECN. NO.	APPD.