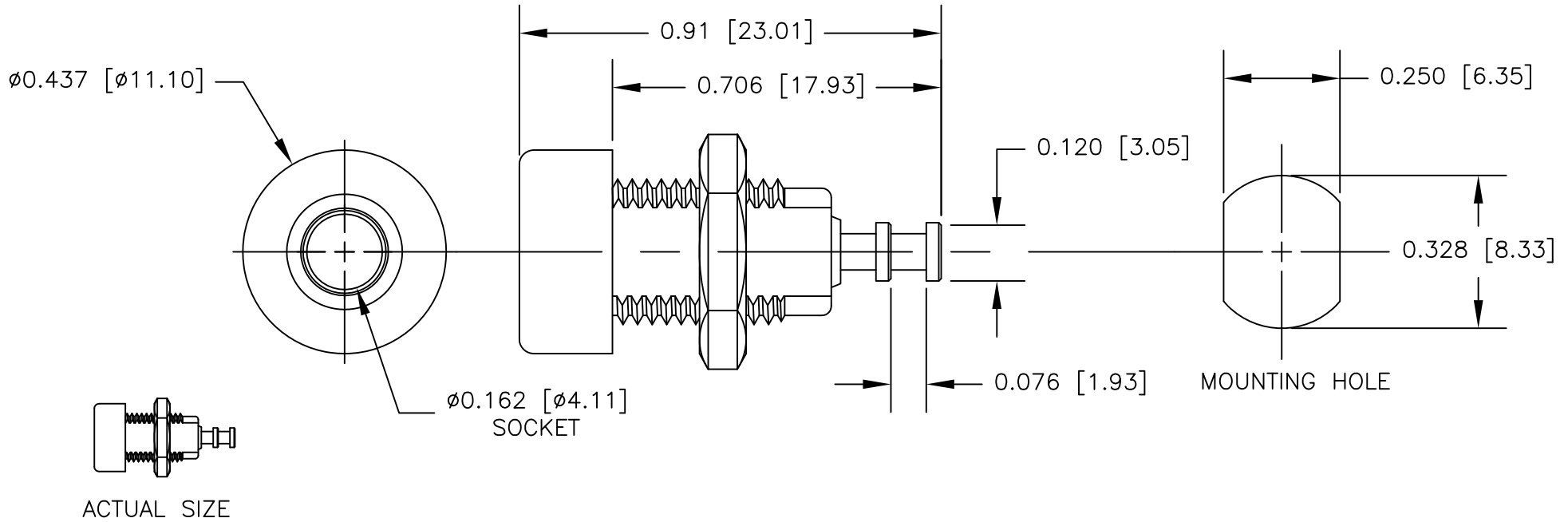


NOTES: UNLESS OTHERWISE SPECIFIED

- CONSTRUCTION:
HANDLE: NYLON. AVAILABLE IN TEN COLORS.
SOCKET: NICKEL PLATED BRASS.
- PERFORMANCE:
MAXIMUM CURRENT: 15 AMPS
MAXIMUM VOLTAGE: 7000 VRMS
MAXIMUM TEMPERATURE: 200°F (93°C)

		REVISIONS	
LTR	DESCRIPTION	DATE	APPROVED



		UNLESS OTHERWISE SPECIFIED DIMENSIONS ARE IN INCHES TOLERANCES ARE: FRACTIONS DECIMALS ANGLES ± .XX ± ± .XXX ±	CONTRACT NO.		E-Z-HOOK DIVISION OF TEKTEST INC. ARCADIA, CA 91006 U.S.A.			
			APPROVALS	DATE				
		MATERIAL SEE NOTE.	APPROVED BY		DESCRIPTION STD BANANA SOCKET PANEL MOUNT			
		FINISH SEE NOTE.			SIZE	CODE IDENT NO.	DRAWING NO.	REV.
NEXT ASSY	USED ON				A	08505	9284	
APPLICATION		DO NOT SCALE DRAWING		SCALE		3:1		SHEET 1 OF 1

THE INFORMATION CONTAINED IN THIS DOCUMENT IS PROPRIETARY TO E-Z-HOOK. THE INFORMATION IS NOT TO BE REPRODUCED WITHOUT PRIOR WRITTEN PERMISSION OF E-Z-HOOK, DIV. OF TEKTEST INC. MAXIMUM TESTED RATINGS IN A HANDS-FREE CONTROLLED ENVIRONMENT. MAXIMUM RATINGS ARE NOT TO BE USED CONCURRENTLY.