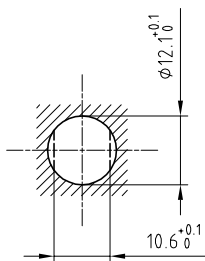


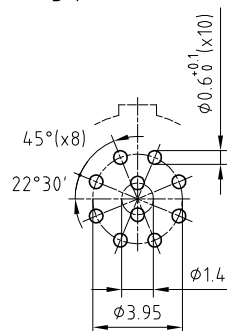
Outer shell	: Brass (UNS C38500)	Chrome plated (FS-QQ-C-320B)
Earthing crown	: Bronze (UNS C54400)	Nickel plated (FS-QQ-N-290A)
Insulator	: PEEK	-
Female contact	: Bronze (UNS C54400)	Gold plated (ISO 4523)
Notched nut	: Brass (UNS C38500)	Chrome plated (FS-QQ-C-320B)
Locking washer	: Bronze (UNS C52100)	Nickel plated (FS-QQ-N-290A)
Other metallic parts	: Brass (UNS C38500)	Nickel plated (FS-QQ-N-290A)

Panel cut-out



Torque for mounting nut : 4.5 Nm

PCB drilling pattern



Spanner for notched nut : DCH.91.161.PA

**Fixed socket , with two nuts , with key (G) ,  
for PCB . (Back panel mounting) .  
Series 1B , multipole (10)**

ETUDE N°

Echelle —	Dessiné	28.05.1990	CF / RMO
	Contrôle	18.10.2010	JPBA/ATVI
	Modif.	01	18.10.2010 / OVU



**LEMO**

CH-1024 Ecublens

**ECG.1B.310.CLN**