

LCD Trip Odometer/Hour Meter/Counter Series T45

ENM's Series T45, 7mm, Solid State Digital Modules feature a 7-digit, 7-segment LCD display with operating indicators and optional backlighting. All models have a resettable second channel. Nonvolatile memory retains data for over 10 years without power. Ideal for PCB mount and/or maintenance applications.



T45A2
Trip odometer with backlight



T45A3
Maintenance Hour meter (1/10) with backlight



T45A4
Counter with backlight



T45A5
Maintenance Hour meter (1/100) with backlight

Specifications

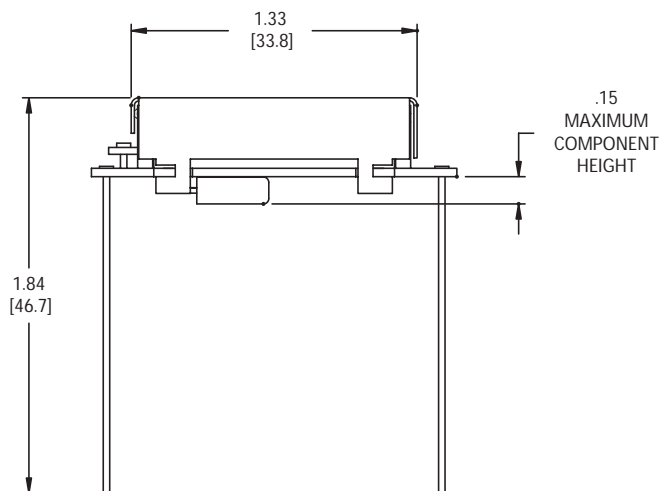
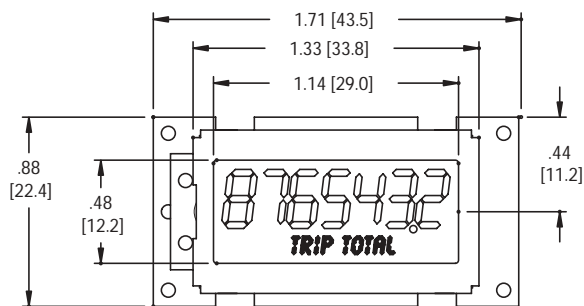
Display Reading:	0.0 to 999999.9 Hour Meter (1/10) .00 to 99999.99 Hour Meter (1/100) 0.0 to 999999.9 Odometer 00 to 9999999 Up Counter Automatic recycle on overflow Identical capacity for both channels
Digit Height:	7mm digits
Count Speed:	500 Hz max
Operating Voltage:	8-28VDC (Module) 9-15VDC (Backlight)
Operating Current:	<4mA nominal @ 8-24VDC (Module) 12.5mA maximum @ 28VDC (Module) <26mA nominal @ 12VDC (Backlight) 36mA maximum @ 15VDC (Backlight)
Operating Temperature:	-40°C to +85°C
Vibration Resistance:	Withstands 10 to 75Hz @ 1 to 8 G's
Shock Resistance:	SAEJ137853G
Accuracy:	Better than $\pm 0.01\%$
Humidity:	95% RH @ 32°C for 2 hours
Protection:	Alternator load dump, inductive switching & reverse polarity
Bezel Styles:	Black or Chrome
Backlight Color:	Yellow-Green (570nm, standard) Blue, Orange, Red & Yellow available

Features

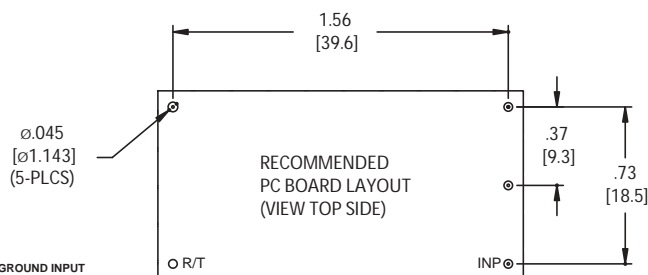
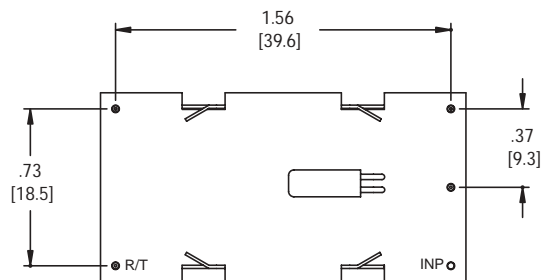
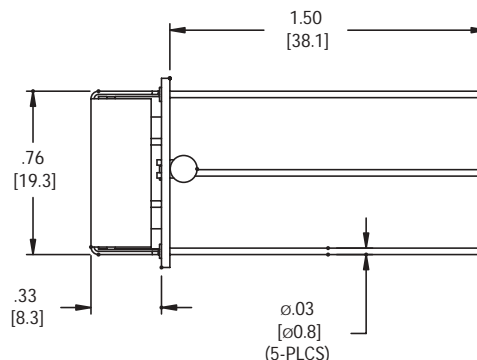
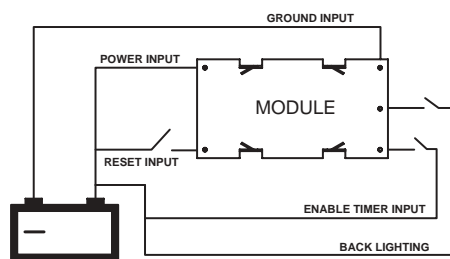
- Solid state circuitry for high reliability
- Long life LED backlighting
- Non-volatile memory (no battery)
- Quartz crystal for high accuracy
- Low cost and small size
- Low operating current
- Wide operating voltage and temperature range
- Very high shock and vibration specs
- Two channel design with resettable second channel
- Running indicator for hour meter
- Made in the U.S.A.

2004 ENM Co.®

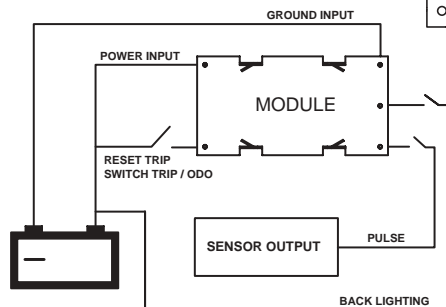
T-45 Series



T45 TIMER



T45 TRIP/ODOMETER



2004 ENM Co.®

LIMITED WARRANTY HOUR METERS

ENM Company hour meters are warranted to the consumer to be free from defects in material and workmanship for a period of 1 year. All ENM products which fall within the warranty period due to defects in material or workmanship will be repaired or replaced, at ENM's option, without charge to the consumer when returned with proof of purchase to any authorized ENM dealer in the United States, transportation charges prepaid, provided there is no evidence of improper installation, tampering, or other abuse. All implied warranties, including any implied warranty of merchantability or fitness for a particular purpose, shall be limited in duration to the express warranty period specified above. ENM disclaims any liability for consequential damages due to breach of any written or implied warranty on its hour meter. Datasheet information subject to change.