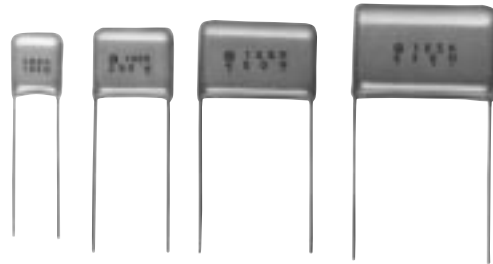


Metallized Polyester Film Capacitor

Type: **ECQE(F)**

Non-inductive construction using metallized Polyester film with flame retardant epoxy resin coating



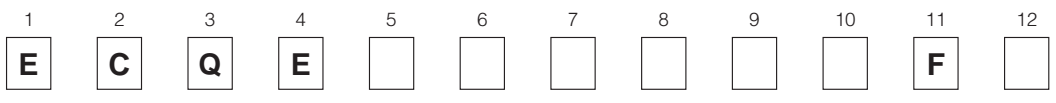
■ Features

- Self-healing property
- Excellent electrical characteristics
- Flame retardant epoxy resin coating

■ Recommended Applications

- General purpose usage
- ※ Please contact us when applications are CD I , ignitor etc.

■ Explanation of Part Numbers



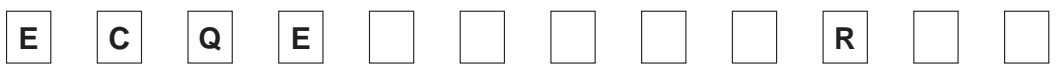
Product code Dielectric & construction Rated volt. Capacitance Cap. Tol. Suffix Suffix

1	100VDC	10	1000VDC
2	250VDC	12	1250VDC
4	400VDC	1A	125VAC
6	630VDC	2A	250VAC

J	±5%
K	±10%
M	±20%

Blank	Type 1	Straight
B	Type 2	
W	Type 3	Crimped lead
3	Ammo	Crimped taping
6	Ammo	Crimped taping
9	Reel	Crimped taping

● Explanation of Part Number for Odd Size Taping

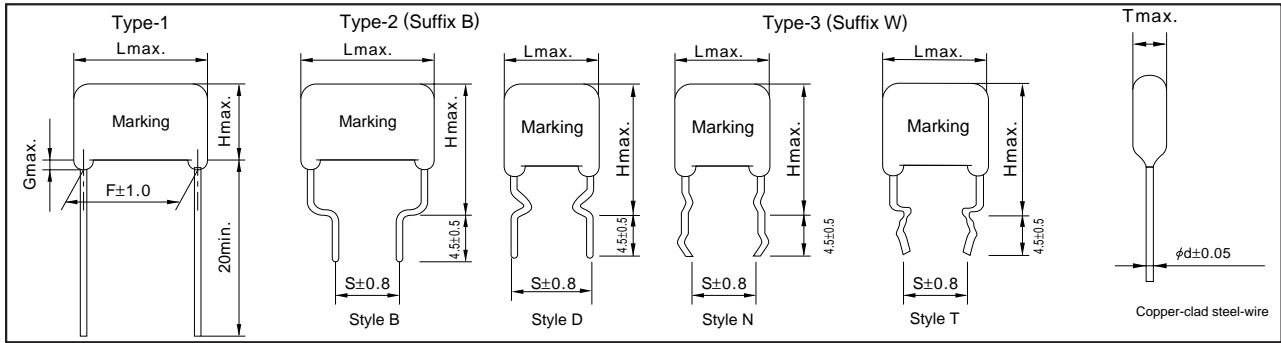


Product code Dielectric & construction Rated volt. Capacitance Suffix Cap. Tol. Suffix

■ Specifications

Category temp. range	-40 to +85°C (+105°C.....75% of Rated voltage)	
Rated voltage	100VDC, 250VDC, 400VDC, 630VDC, 1000VDC, 1250VDC, 125VAC, 250VAC	
Capacitance range	0.001 to 10μF(E-12)	
Capacitance tolerance	±5%(J), ±10%(K), ±20%(M)	
Dissipation factor	1.0%max. (20°C, 1kHz)	
Withstand voltage	● Rated volt. 100V to 630VDC Between terminals : Rated volt.(VDC)×150% 60s	
	● Rated volt. 1000VDC, 1250VDC Between terminals : Rated volt.(VDC)×175% 2 to 5s or 1000VAC 60s Between terminals to enclosure : 1500VAC 60s	
	● Rated volt. 125VAC, 250VAC Between terminals : Rated volt.(VAC)×230% 60s Between terminals to enclosure : 1500VAC 60s	
Insulation resistance	100V to 630VDC:	C ≤ 0.33μF : 9000MΩmin. (20°C, 100VDC 60s) C > 0.33μF : 3000MΩ . μFmin.
	1000VDC, 1250VDC:	10000MΩmin. (20°C, 100VDC 60s) 2000MΩmin. (20°C, 500VDC 60s)
	125VAC, 250VAC:	2000MΩmin. (20°C, 500VDC 60s)

■ Dimensions in mm(not to scale)

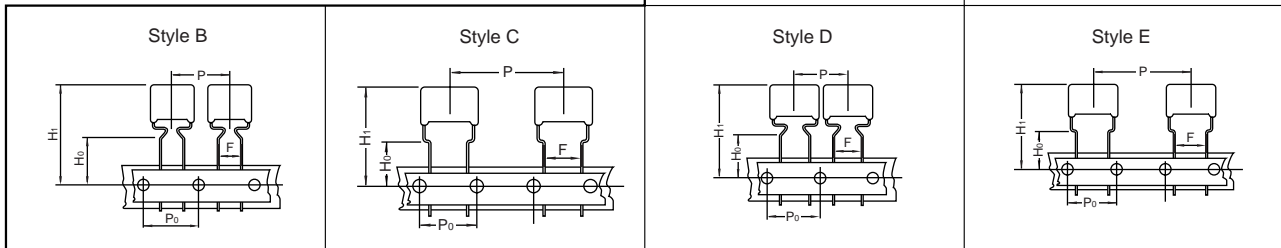


■ Packaging Specifications for Bulk Package

Packing quantity: 100pcs./bag

■ Taping Specifications for Automatic Insertion

● Taping style



* See page 22 for Taping dimensions

● Packaging Specifications

Type	Rated volt.	Cap. range (μF)	Taping style							Packing	suffix
			AD	AS	AB	B	C	D	E		
ECQE (F)	100VDC	0.56 to 0.68	○							Ammo	() F3
		0.56 to 0.68	○							Reel	() F9
		0.82 to 1.0				○				Ammo	() F3
		1.2 to 3.3					○			Ammo	() F3
		1.2 to 3.3							○	Ammo	R() F
	250VDC	0.01 to 0.27	○							Ammo	() F3
		0.33				○				Ammo	() F3
		0.39 to 1.5					○			Ammo	() F3
		0.01 to 0.33							○	Ammo	R() F
		0.39 to 1.5							○	Ammo	R() F
	400VDC	0.01 to 0.1	○							Ammo	() F3
		0.12 to 0.47					○			Ammo	() F3
		0.01 to 0.1	○							Reel	() F9
		0.01 to 0.1							○	Ammo	R() F
		0.12 to 0.47							○	Ammo	R() F
	630VDC	0.01 to 0.033	○							Ammo	() F3
		0.039 to 0.047				○				Ammo	() F3
		0.056 to 0.22					○			Ammo	() F3
		0.01 to 0.047	○							Reel	() F9
		0.01 to 0.047							○	Ammo	R() F
0.056 to 0.22								○	Ammo	R() F	
1000VDC	0.001 to 0.1							○	Ammo	R() F	
1250VDC	0.001 to 0.022							○	Ammo	R() F	
125VAC	0.01 to 0.15				○				Ammo	() F6	
	0.18 to 0.47					○			Ammo	() F3	
	0.01 to 0.22							○	Ammo	R() F	
	0.27 to 0.47							○	Ammo	R() F	
250VAC	0.01 to 0.033				○				Ammo	() F6	
	0.01 to 0.047							○	Ammo	R() F	
	0.056 to 0.22							○	Ammo	R() F	

● Lead Spacing

Style	Lead Spacing
AD	5.0mm
AB	5.0mm
B	5.0mm
C	5.0mm
D	7.5mm
E	7.5mm

* See the column "Rating, Dimensions & Quantity Box" for packing quantity.

■ Rating, Dimensions & Quantity/Ammo Box

● Rated voltage : 100VDC, Capacitance tolerance : $\pm 5\%$ (J), $\pm 10\%$ (K)

Part No	Cap. (μ F)	Dimensions (mm)								Quantity		
		L _{max.}	T _{max.}	H _{max.}		F	S	G _{max.}	ϕ d	5mm Ammo	5mm Ammo	7.5mm Ammo
				Type-1	Type-2,3							
ECQE1564□F()	0.56	12.0	5.5	10.9	15.9	10.0	10.0	1.0	0.60	500	—	—
ECQE1684□F()	0.68	12.0	6.0	11.9	16.9	10.0	10.0	1.0	0.60			
ECQE1824□F()	0.82	12.0	6.0	13.5	18.5	10.0	10.0	1.0	0.60	—	1,000	—
ECQE1105□F()	1.0	12.0	6.7	14.0	19.0	10.0	10.0	1.0	0.60			
ECQE1125□F()	1.2	18.5	5.5	12.8	17.8	15.0	10.0	1.0	0.60			
ECQE1155□F()	1.5	18.5	6.0	13.4	18.4	15.0	10.0	1.0	0.80			
ECQE1185□F()	1.8	18.5	6.5	14.4	19.4	15.0	10.0	1.0	0.80			
ECQE1225□F()	2.2	18.5	7.0	15.0	20.0	15.0	10.0	1.0	0.80			
ECQE1275□F()	2.7	18.5	8.0	15.8	20.8	15.0	10.0	1.0	0.80			
ECQE1335□F()	3.3	18.5	8.5	16.5	21.5	15.0	10.0	1.0	0.80			
ECQE1395□F()	3.9	26.0	7.0	16.4	21.4	22.5	15.0	1.0	0.80			
ECQE1475□F()	4.7	26.0	7.5	17.0	22.0	22.5	15.0	1.0	0.80			
ECQE1565□F()	5.6	26.0	8.3	17.5	22.5	22.5	15.0	1.0	0.80			
ECQE1685□F()	6.8	26.0	9.0	18.5	23.5	22.5	15.0	1.0	0.80			
ECQE1825□F()	8.2	26.0	10.0	20.0	25.0	22.5	15.0	1.5	0.80			
ECQE1106□F()	10.0	26.0	11.5	21.0	26.0	22.5	15.0	1.5	0.80			

↑ ↑
 —————Suffix for lead crimped or taped type
 —————Cap. tol. code

StyleN,styleD:0.056 to 1.0 μ F
 StyleT,styleB:1.2 to 10.0 μ F

■ Rating, Dimensions & Quantity/Ammo Box

● Rated voltage : 250VDC, Capacitance tolerance : $\pm 5\%$ (J), $\pm 10\%$ (K)

Part No	Cap. (μ F)	Dimensions (mm)								Quantity		
		L _{max.}	T _{max.}	H _{max.}		F	S	G _{max.}	ϕ d	5mm Ammo	5mm Ammo	7.5mm Ammo
				Type-1	Type-2,3							
ECQE2103□F()	0.01	10.3	4.3	7.4	12.4	7.5	7.5	1.0	0.60	1,000	—	1,000
ECQE2123□F()	0.012	10.3	4.4	7.5	12.5	7.5	7.5	1.0	0.60			
ECQE2153□F()	0.015	10.3	4.4	7.5	12.5	7.5	7.5	1.0	0.60			
ECQE2183□F()	0.018	10.3	4.4	7.5	12.5	7.5	7.5	1.0	0.60			
ECQE2223□F()	0.022	10.3	4.4	7.5	12.5	7.5	7.5	1.0	0.60			
ECQE2273□F()	0.027	10.3	4.4	7.5	12.5	7.5	7.5	1.0	0.60			
ECQE2333□F()	0.033	10.3	4.5	7.5	12.5	7.5	7.5	1.0	0.60			
ECQE2393□F()	0.039	10.3	4.5	7.5	12.5	7.5	7.5	1.0	0.60			
ECQE2473□F()	0.047	10.3	4.5	7.5	12.5	7.5	7.5	1.0	0.60			
ECQE2563□F()	0.056	10.3	4.8	7.9	12.9	7.5	7.5	1.0	0.60			
ECQE2683□F()	0.068	10.3	4.5	7.5	12.5	7.5	7.5	1.0	0.60			
ECQE2823□F()	0.082	10.3	4.9	8.0	13.0	7.5	7.5	1.0	0.60			
ECQE2104□F()	0.1	10.3	5.8	8.4	13.4	7.5	7.5	1.0	0.60			
ECQE2124□F()	0.12	10.3	6.0	9.0	14.0	7.5	7.5	1.0	0.60			
ECQE2154□F()	0.15	10.3	6.0	10.8	15.8	7.5	7.5	1.0	0.60			
ECQE2184□F()	0.18	12.0	5.0	10.3	15.3	10.0	10.0	1.0	0.60			
ECQE2224□F()	0.22	12.0	5.5	10.5	15.5	10.0	10.0	1.0	0.60			
ECQE2274□F()	0.27	12.0	6.0	11.5	16.5	10.0	10.0	1.0	0.60			
ECQE2334□F()	0.33	12.0	6.5	12.0	17.0	10.0	10.0	1.0	0.60			
ECQE2394□F()	0.39	18.5	4.9	12.0	17.0	15.0	10.0	1.0	0.60			
ECQE2474□F()	0.47	18.5	5.3	12.5	17.5	15.0	10.0	1.0	0.60			
ECQE2564□F()	0.56	18.5	5.5	13.0	18.0	15.0	10.0	1.0	0.60			
ECQE2684□F()	0.68	18.5	6.0	13.5	18.5	15.0	10.0	1.0	0.80			
ECQE2824□F()	0.82	18.5	6.5	14.5	19.5	15.0	10.0	1.0	0.80			
ECQE2105□F()	1.0	18.5	7.4	15.0	20.0	15.0	10.0	1.0	0.80			
ECQE2125□F()	1.2	18.5	8.0	15.9	20.9	15.0	10.0	1.0	0.80			
ECQE2155□F()	1.5	18.5	9.0	16.8	21.8	15.0	10.0	1.0	0.80			
ECQE2185□F()	1.8	26.0	7.5	15.5	20.5	22.5	15.0	1.0	0.80			
ECQE2225□F()	2.2	26.0	8.5	16.3	21.3	22.5	15.0	1.0	0.80			
ECQE2275□F()	2.7	26.0	9.4	17.0	22.0	22.5	15.0	1.0	0.80			
ECQE2335□F()	3.3	26.0	10.3	18.0	23.0	22.5	15.0	1.5	0.80			
ECQE2395□F()	3.9	26.0	11.0	20.5	25.5	22.5	15.0	1.5	0.80			
ECQE2475□F()	4.7	26.0	12.0	21.5	26.5	22.5	15.0	1.5	0.80			
ECQE2565□F()	5.6	31.0	11.8	21.0	26.0	27.5	22.5	1.5	0.80			
ECQE2685□F()	6.8	31.0	13.0	22.4	27.4	27.5	22.5	1.5	0.80			
ECQE2825□F()	8.2	31.0	14.3	23.5	28.5	27.5	22.5	1.5	0.80			
ECQE2106□F()	10.0	31.0	15.9	25.8	30.8	27.5	22.5	1.5	0.80			

↑ ↑
 —————Suffix for lead crimped or taped type
 —————Cap. tol. code

StyleN,StyleD:0.01 to 0.33 μ F
 StyleT,StyleB:0.039 to 10.0 μ F

■ Rating, Dimensions & Quantity/Ammo Box

● Rated voltage : 400VDC, Capacitance tolerance : ±5%(J), ±10%(K)

Part No.	Cap. (μF)	Dimensions (mm)								Quantity.				
		L _{max.}	T _{max.}	H _{max.}		F		S		G _{max.}	ø d	Standard 5mm	Odd size 5mm	Odd size 7.5mm
				Type-1	Type-2,3	Type-1	Type-2,3	Type-1	Type-2,3					
ECQE4103□F()	0.01	10.3	4.3	7.4	12.4	7.5	7.5	1.0	0.60	1,000	—	1,000		
ECQE4123□F()	0.012	10.3	4.4	7.5	12.5	7.5	7.5	1.0	0.60					
ECQE4153□F()	0.015	10.3	4.4	7.5	12.5	7.5	7.5	1.0	0.60					
ECQE4183□F()	0.018	10.3	4.4	7.5	12.5	7.5	7.5	1.0	0.60					
ECQE4223□F()	0.022	10.3	4.8	7.9	12.9	7.5	7.5	1.0	0.60					
ECQE4273□F()	0.027	10.3	5.5	8.0	13.0	7.5	7.5	1.0	0.60					
ECQE4333□F()	0.033	10.3	6.0	9.0	14.0	7.5	7.5	1.0	0.60	500	—	1,000		
ECQE4393□F()	0.039	12.0	4.9	8.0	13.0	10.0	10.0	1.0	0.60					
ECQE4473□F()	0.047	12.0	5.0	8.3	13.3	10.0	10.0	1.0	0.60					
ECQE4563□F()	0.056	12.0	5.0	10.0	15.0	10.0	10.0	1.0	0.60					
ECQE4683□F()	0.068	12.0	5.4	10.5	15.5	10.0	10.0	1.0	0.60					
ECQE4823□F()	0.082	12.0	5.8	11.0	16.0	10.0	10.0	1.0	0.60					
ECQE4104□F()	0.1	12.0	6.3	12.0	17.0	10.0	10.0	1.0	0.60	—	—	—		
ECQE4124□F()	0.12	18.5	5.0	10.0	15.0	15.0	10.0	1.0	0.60					
ECQE4154□F()	0.15	18.5	5.0	12.4	17.4	15.0	10.0	1.0	0.60					
ECQE4184□F()	0.18	18.5	5.4	12.5	17.5	15.0	10.0	1.0	0.60					
ECQE4224□F()	0.22	18.5	5.9	13.0	18.0	15.0	10.0	1.0	0.60					
ECQE4274□F()	0.27	18.5	6.5	14.3	19.3	15.0	10.0	1.0	0.80					
ECQE4334□F()	0.33	18.5	7.0	14.9	19.9	15.0	10.0	1.0	0.80					
ECQE4394□F()	0.39	18.5	7.5	15.4	20.4	15.0	10.0	1.0	0.80					
ECQE4474□F()	0.47	18.5	7.8	17.0	22.0	15.0	10.0	1.0	0.80					
ECQE4564□F()	0.56	26.0	6.5	16.0	21.0	22.5	15.0	1.0	0.80					
ECQE4684□F()	0.68	26.0	7.0	16.5	21.5	22.5	15.0	1.0	0.80					
ECQE4824□F()	0.82	26.0	7.9	17.3	22.3	22.5	15.0	1.0	0.80					
ECQE4105□F()	1.0	26.0	8.5	18.0	23.0	22.5	15.0	1.0	0.80					
ECQE4125□F()	1.2	26.0	9.5	18.9	23.9	22.5	15.0	1.0	0.80					
ECQE4155□F()	1.5	31.0	9.5	19.0	24.0	27.5	22.5	1.0	0.80					
ECQE4185□F()	1.8	31.0	11.0	20.5	25.5	27.5	22.5	1.5	0.80					
ECQE4225□F()	2.2	31.0	11.0	22.0	27.0	27.5	22.5	1.5	0.80					

StyleN,StyleD:0.01 to 1.0 μF
StyleT,StyleB:0.12 to 2.2 μF

● Rated voltage : 630VDC, Capacitance tolerance : ±5%(J), ±10%(K)

Part No.	Cap. (μF)	Dimensions (mm)								Quantity.				
		L _{max.}	T _{max.}	H _{max.}		F		S		G _{max.}	ø d	Standard 5mm	Odd size 5mm	Odd size 7.5mm
				Type-1	Type-2,3	Type-1	Type-2,3	Type-1	Type-2,3					
ECQE6103□F()	0.01	12.0	4.5	7.5	12.5	10.0	10.0	1.0	0.60	1,000	—	1,000		
ECQE6123□F()	0.012	12.0	4.5	7.8	12.8	10.0	10.0	1.0	0.60					
ECQE6153□F()	0.015	12.0	5.0	8.2	13.2	10.0	10.0	1.0	0.60					
ECQE6183□F()	0.018	12.0	4.9	10.0	15.0	10.0	10.0	1.0	0.60					
ECQE6223□F()	0.022	12.0	5.3	10.5	15.5	10.0	10.0	1.0	0.60					
ECQE6273□F()	0.027	12.0	5.5	10.9	15.9	10.0	10.0	1.0	0.60					
ECQE6333□F()	0.033	12.0	6.0	11.9	16.9	10.0	10.0	1.0	0.60	500	—	1,000		
ECQE6393□F()	0.039	12.0	6.0	13.4	18.4	10.0	10.0	1.0	0.60					
ECQE6473□F()	0.047	12.0	6.5	13.5	18.5	10.0	10.0	1.0	0.60					
ECQE6563□F()	0.056	18.5	5.4	10.5	15.5	15.0	10.0	1.0	0.60					
ECQE6683□F()	0.068	18.5	5.8	11.0	16.0	15.0	10.0	1.0	0.60					
ECQE6823□F()	0.082	18.5	6.5	12.0	17.0	15.0	10.0	1.0	0.60					
ECQE6104□F()	0.1	18.5	6.3	14.0	19.0	15.0	10.0	1.0	0.60	—	—	—		
ECQE6124□F()	0.12	18.5	6.3	14.5	19.5	15.0	10.0	1.0	0.80					
ECQE6154□F()	0.15	18.5	7.5	15.4	20.4	15.0	10.0	1.0	0.80					
ECQE6184□F()	0.18	18.5	8.0	16.0	21.0	15.0	10.0	1.0	0.80					
ECQE6224□F()	0.22	18.5	9.0	16.5	21.5	15.0	10.0	1.0	0.80					
ECQE6274□F()	0.27	26.0	7.0	16.5	21.5	22.5	15.0	1.0	0.80					
ECQE6334□F()	0.33	26.0	7.8	17.0	22.0	22.5	15.0	1.0	0.80					
ECQE6394□F()	0.39	26.0	8.5	17.9	22.9	22.5	15.0	1.0	0.80					
ECQE6474□F()	0.47	26.0	9.3	18.5	23.5	22.5	15.0	1.0	0.80					
ECQE6564□F()	0.56	26.0	10.0	20.0	25.0	22.5	15.0	1.5	0.80					
ECQE6684□F()	0.68	26.0	11.5	21.0	26.0	22.5	15.0	1.5	0.80					
ECQE6824□F()	0.82	31.0	11.3	20.5	25.5	27.5	22.5	1.5	0.80					
ECQE6105□F()	1.0	31.0	12.5	21.9	26.9	27.5	22.5	1.5	0.80					
ECQE6125□F()	1.2	31.0	13.5	23.0	28.0	27.5	22.5	1.5	0.80					
ECQE6155□F()	1.5	31.0	15.3	24.7	29.7	27.5	22.5	1.5	0.80					
ECQE6185□F()	1.8	31.0	16.8	27.0	32.0	27.5	22.5	1.5	0.80					
ECQE6225□F()	2.2	31.0	19.5	29.0	34.0	27.5	22.5	1.5	0.80					

↑ Suffix for lead crimped or taped type
Cap. tol. code

StyleN,StyleD:0.01 to 0.047 μF
StyleT,StyleB:0.056 to 2.2 μF

■ Rating, Dimensions & Quantity/Ammo Box

● Rated voltage : 1000VDC, 125VAC, Capacitance tolerance : ±5%(J), ±10%(K), ±20%(M)

Part No.	Cap. (μ F)	Dimensions (mm)								Quantity
		L _{max.}	T _{max.}	H _{max.}		F	S	G _{max.}	ød	Ammo
				Type-1	Type-2					
ECQE10102□ _F ^E ()	0.001	15.5	6.0	11.0	16.0	12.5	10.0	1.0	0.60	500
ECQE10122□ _F ^E ()	0.0012	15.5	6.0	11.0	16.0	12.5	10.0	1.0	0.60	
ECQE10152□ _F ^E ()	0.0015	15.5	6.0	11.0	16.0	12.5	10.0	1.0	0.60	
ECQE10182□ _F ^E ()	0.0018	15.5	6.0	11.0	16.0	12.5	10.0	1.0	0.60	
ECQE10222□ _F ^E ()	0.0022	15.5	6.0	11.5	16.5	12.5	10.0	1.0	0.60	
ECQE10272□ _F ^E ()	0.0027	15.5	6.5	12.0	17.0	12.5	10.0	1.0	0.60	
ECQE10332□ _F ^E ()	0.0033	15.5	6.0	11.5	16.5	12.5	10.0	1.0	0.60	
ECQE10392□ _F ^E ()	0.0039	15.5	6.5	12.0	17.0	12.5	10.0	1.0	0.60	
ECQE10472□ _F ^E ()	0.0047	15.5	7.0	12.5	17.5	12.5	10.0	1.0	0.60	
ECQE10562□ _F ^E ()	0.0056	15.5	7.5	13.0	18.0	12.5	10.0	1.0	0.60	
ECQE10682□ _F ^E ()	0.0068	15.5	7.0	12.5	17.5	12.5	10.0	1.0	0.60	
ECQE10822□ _F ^E ()	0.0082	15.5	6.5	12.0	17.0	12.5	12.5	1.0	0.60	
ECQE10103□ _F ^E ()	0.01	15.5	6.0	11.0	16.0	12.5	12.5	1.0	0.60	
ECQE10123□ _F ^E ()	0.012	15.5	6.0	12.0	17.0	12.5	12.5	1.0	0.60	
ECQE10153□ _F ^E ()	0.015	15.5	7.0	12.5	17.5	12.5	12.5	1.0	0.60	
ECQE10183□ _F ^E ()	0.018	15.5	7.5	13.0	20.0	12.5	12.5	1.0	0.80	
ECQE10223□ _F ^E ()	0.022	15.5	7.5	15.5	22.5	12.5	12.5	1.0	0.80	
ECQE10273□ _F ^E ()	0.027	21.0	6.0	13.0	18.0	17.5	12.5	1.0	0.80	
ECQE10333□ _F ^E ()	0.033	21.0	6.5	14.0	19.0	17.5	12.5	1.0	0.80	
ECQE10393□ _F ^E ()	0.039	21.0	7.0	14.5	19.5	17.5	12.5	1.0	0.80	
ECQE10473□ _F ^E ()	0.047	21.0	7.5	15.5	20.5	17.5	12.5	1.0	0.80	
ECQE10563□ _F ^E ()	0.056	21.0	7.5	17.0	22.0	17.5	12.5	1.0	0.80	
ECQE10683□ _F ^E ()	0.068	21.0	8.5	18.0	23.0	17.5	12.5	1.0	0.80	
ECQE10823□ _F ^E ()	0.082	21.0	9.0	18.5	23.5	17.5	12.5	1.0	0.80	
ECQE10104□ _F ^E ()	0.1	21.0	10.0	20.0	25.0	17.5	12.5	1.0	0.80	
ECQE10124□ _F ^E ()	0.12	26.0	9.0	18.5	23.5	22.5	17.5	1.0	0.80	
ECQE10154□ _F ^E ()	0.15	26.0	10.0	20.0	25.0	22.5	17.5	1.5	0.80	
ECQE10184□ _F ^E ()	0.18	26.0	10.5	22.0	27.0	22.5	17.5	1.5	0.80	
ECQE10224□ _F ^E ()	0.22	26.0	12.0	23.0	28.0	22.5	17.5	1.5	0.80	

Suffix for lead crimped or taped type
 Cap. tol. code

StyleD:0.001 to 0.022 μ F
 StyleB:0.027 to 0.22 μ F

Note)

Making for rated voltage
 Type E: (1000V)
 Type F: (1000V, 125V~)

■ Rating, Dimensions & Quantity/Ammo Box

● Rated voltage : 1250VDC, 125VAC, Capacitance tolerance : ±5%(J), ±10%(K), ±20%(M)

Part No.	Cap. (μ F)	Dimensions (mm)								Quantity	
		L _{max.}	T _{max.}	H _{max.}		F		S		G _{max.}	ød
				Type-1	Type-2	Type-1	Type-2	Type-1			
ECQE12102□ _F (^E)	0.001	15.5	6.0	11.0	16.0	12.5	10.0	1.0	0.60	500	
ECQE12122□ _F (^E)	0.0012	15.5	6.0	11.0	16.0	12.5	10.0	1.0	0.60		
ECQE12152□ _F (^E)	0.0015	15.5	6.0	11.0	16.0	12.5	10.0	1.0	0.60		
ECQE12182□ _F (^E)	0.0018	15.5	6.0	11.0	16.0	12.5	10.0	1.0	0.60		
ECQE12222□ _F (^E)	0.0022	15.5	6.0	11.5	16.5	12.5	10.0	1.0	0.60		
ECQE12272□ _F (^E)	0.0027	15.5	6.5	12.0	17.0	12.5	10.0	1.0	0.60		
ECQE12332□ _F (^E)	0.0033	15.5	6.0	11.5	16.5	12.5	10.0	1.0	0.60		
ECQE12392□ _F (^E)	0.0039	15.5	6.5	12.0	17.0	12.5	10.0	1.0	0.60		
ECQE12472□ _F (^E)	0.0047	15.5	7.0	12.5	17.5	12.5	10.0	1.0	0.60		
ECQE12562□ _F (^E)	0.0056	15.5	7.5	13.0	18.0	12.5	10.0	1.0	0.60		
ECQE12682□ _F (^E)	0.0068	15.5	7.5	15.0	20.0	12.5	10.0	1.0	0.60		
ECQE12822□ _F (^E)	0.0082	21.0	5.0	12.0	17.0	17.5	12.5	1.0	0.60		
ECQE12103□ _F (^E)	0.01	21.0	5.0	12.5	17.5	17.5	12.5	1.0	0.60		
ECQE12123□ _F (^E)	0.012	21.0	5.5	13.0	18.0	17.5	12.5	1.0	0.60		
ECQE12153□ _F (^E)	0.015	21.0	6.0	13.5	18.5	17.5	12.5	1.0	0.60		
ECQE12183□ _F (^E)	0.018	21.0	6.5	14.5	19.5	17.5	12.5	1.0	0.80		
ECQE12223□ _F (^E)	0.022	21.0	7.0	15.0	20.0	17.5	12.5	1.0	0.80		
ECQE12273□ _F (^E)	0.027	26.0	6.0	15.5	20.5	22.5	17.5	1.0	0.80		
ECQE12333□ _F (^E)	0.033	26.0	6.5	16.0	21.0	22.5	17.5	1.0	0.80		
ECQE12393□ _F (^E)	0.039	26.0	7.0	16.5	21.5	22.5	17.5	1.0	0.80		
ECQE12473□ _F (^E)	0.047	26.0	8.0	17.0	22.0	22.5	17.5	1.0	0.80		
ECQE12563□ _F (^E)	0.056	31.0	7.5	17.0	22.0	27.5	22.5	1.0	0.80		
ECQE12683□ _F (^E)	0.068	31.0	8.0	17.5	22.5	27.5	22.5	1.0	0.80		
ECQE12823□ _F (^E)	0.082	31.0	9.0	18.5	23.5	27.5	22.5	1.0	0.80		
ECQE12104□ _F (^E)	0.1	31.0	10.0	19.5	24.5	27.5	22.5	1.0	0.80		
ECQE12124□ _F (^E)	0.12	31.0	11.5	20.5	25.5	27.5	22.5	1.5	0.80		
ECQE12154□ _F (^E)	0.15	31.0	12.0	23.0	28.0	27.5	22.5	1.5	0.80		
ECQE12184□ _F (^E)	0.18	31.0	13.0	24.5	29.5	27.5	22.5	1.5	0.80		
ECQE12224□ _F (^E)	0.22	31.0	14.5	26.5	31.5	27.5	22.5	1.5	0.80		

Suffix for lead crimped or taped type
 Cap. tol. code

StyleD:0.001to 0.0068 μ F
 StyleB:0.0082 to 0.22 μ F

Note)

Making for rated voltage
 Type E: (1250V)
 Type F: (1250V, 125V~)

■ Rating, Dimensions & Quantity/Ammo Box

● Rated voltage : 125VAC, Capacitance tolerance : ±5%(J), ±10%(K), ±20%(M)

Noise suppression Capacitors (Across-the-line)

Part No.	Cap. (μF)	Dimensions (mm)									Quantity		
		L _{max.}	T _{max.}	H _{max.}		F	S	G _{max.}	ød	Standard 5mm	Odd size 5mm	Odd size 7.5mm	
				Type-1	Type-2,3	Type-1	Type-2,3	Type-1					
ECQE1A103□F()	0.01	10.5	4.5	7.5	12.5	7.5	7.5	1.0	0.60	1,000	—	1,000	
ECQE1A123□F()	0.012	10.5	4.4	7.5	12.5	7.5	7.5	1.0	0.60				
ECQE1A153□F()	0.015	10.5	4.4	7.5	12.5	7.5	7.5	1.0	0.60				
ECQE1A183□F()	0.018	10.5	4.4	7.5	12.5	7.5	7.5	1.0	0.60				
ECQE1A223□F()	0.022	10.5	4.4	7.5	12.5	7.5	7.5	1.0	0.60				
ECQE1A273□F()	0.027	10.5	4.4	7.5	12.5	7.5	7.5	1.0	0.60				
ECQE1A333□F()	0.033	10.5	4.5	7.8	12.8	7.5	7.5	1.0	0.60				
ECQE1A393□F()	0.039	10.5	4.5	7.8	12.8	7.5	7.5	1.0	0.60				
ECQE1A473□F()	0.047	10.5	5.5	8.0	13.0	7.5	7.5	1.0	0.60				
ECQE1A563□F()	0.056	10.5	5.9	8.5	13.5	7.5	7.5	1.0	0.60				
ECQE1A683□F()	0.068	10.5	6.3	9.4	14.4	7.5	7.5	1.0	0.60				
ECQE1A823□F()	0.082	10.5	6.5	9.8	14.8	7.5	7.5	1.0	0.60				
ECQE1A104□F()	0.1	10.5	6.5	11.8	16.8	7.5	7.5	1.0	0.60				
ECQE1A124□F()	0.12	12.5	5.9	11.5	16.5	10.0	10.0	1.0	0.60				
ECQE1A154□F()	0.15	12.5	6.5	12.0	17.0	10.0	10.0	1.0	0.60				
ECQE1A184□F()	0.18	12.5	7.0	12.5	17.5	10.0	10.0	1.0	0.60				
ECQE1A224□F()	0.22	12.5	7.5	13.4	18.4	10.0	10.0	1.0	0.60				
ECQE1A274□F()	0.27	18.5	6.3	12.0	17.0	15.0	10.0	1.0	0.60				
ECQE1A334□F()	0.33	18.5	6.9	12.5	17.5	15.0	10.0	1.0	0.60				
ECQE1A394□F()	0.39	18.5	7.4	13.0	18.0	15.0	10.0	1.0	0.60				
ECQE1A474□F()	0.47	18.5	7.5	15.3	20.3	15.0	10.0	1.0	0.60				

* * Capacitance value over 0.47μF to 2.2μF is available. Please consult us.

StyleN,StyleD:0.01 to 0.22 μF
StyleT,StyleB:0.27 to 0.47 μF

● Rated voltage : 250VAC, Capacitance tolerance : ±5%(J), ±10%(K), ±20%(M)

Noise suppression Capacitors (Across-the-line)

Part No.	Cap. (μF)	Dimensions (mm)									Quantity	
		L _{max.}	T _{max.}	H _{max.}		F	S	G _{max.}	ød	Standard 5mm	Odd size 7.5mm	
				Type-1	Type-2	Type-1	Type-2	Type-1				
ECQE2A103□F()	0.01	12.5	5.5	10.8	15.8	10.0	10.0	1.0	0.60	500	1,000	
ECQE2A123□F()	0.012	12.5	6.0	11.5	16.5	10.0	10.0	1.0	0.60			
ECQE2A153□F()	0.015	12.5	6.3	9.9	14.9	10.0	10.0	1.0	0.60			
ECQE2A183□F()	0.018	12.5	6.0	11.9	16.9	10.0	10.0	1.0	0.60			
ECQE2A223□F()	0.022	12.5	6.0	11.5	16.5	10.0	10.0	1.0	0.60			
ECQE2A273□F()	0.027	12.5	5.5	10.9	15.9	10.0	10.0	1.0	0.60			
ECQE2A333□F()	0.033	12.5	6.0	11.9	16.9	10.0	10.0	1.0	0.60			
ECQE2A393□F()	0.039	12.5	6.0	13.4	18.4	10.0	10.0	1.0	0.60			
ECQE2A473□F()	0.047	12.5	6.5	14.4	19.4	10.0	10.0	1.0	0.60			
ECQE2A563□F()	0.056	18.5	5.4	10.5	15.5	15.0	10.0	1.0	0.60			
ECQE2A683□F()	0.068	18.5	5.8	11.0	16.0	15.0	10.0	1.0	0.60			
ECQE2A823□F()	0.082	18.5	6.3	12.0	17.0	15.0	10.0	1.0	0.60			
ECQE2A104□F()	0.1	18.5	6.3	14.0	19.0	15.0	10.0	1.0	0.60			
ECQE2A124□F()	0.12	18.5	6.8	14.5	19.5	15.0	10.0	1.0	0.80			
ECQE2A154□F()	0.15	18.5	7.5	15.4	20.4	15.0	10.0	1.0	0.80			
ECQE2A184□F()	0.18	18.5	8.0	16.0	21.0	15.0	10.0	1.0	0.80			
ECQE2A224□F()	0.22	18.5	9.0	16.9	21.9	15.0	10.0	1.0	0.80			
ECQE2A274□F()	0.27	26.0	7.0	16.5	21.5	22.5	15.0	1.0	0.80			
ECQE2A334□F()	0.33	26.0	7.8	17.0	22.0	22.5	15.0	1.0	0.80			
ECQE2A394□F()	0.39	26.0	8.5	17.9	22.9	22.5	15.0	1.0	0.80			
ECQE2A474□F()	0.47	26.0	9.3	18.5	23.5	22.5	15.0	1.0	0.80			

↑ Suffix for lead crimped or taped type
Cap. tol. code

StyleD:0.01 to 0.047 μF
StyleB:0.056 to 0.47 μF

* * Capacitance value over 0.47μF to 2.2μF is available. Please consult us.

* When using these capacitors as a across-the-line capacitor it shall be required to follow either item 1. or item 2. condition.

1.Capacitor shall be connected in parallel with varistor (Specified varistor voltage in table 1.)

2.Voltage applied for capacitor shall not exceed other than specified in table 1, when using these capacitors.

Table 1

Cap. Rated Voltage	Varistor voltage	Pulse voltage
125VAC	250V	250V _{0-P}
250VAC	470V	630V _{0-P}