

FEATURES AND SPECIFICATIONS

Features and Benefits

- Sizes 2 to 25 circuits
- Positive latch secures housing to locking crown of mating header or panel mount
- Anti-entanglement/overstress ribs prevent discrete wires from catching under latch during harness manufacturing and storage
- Front ribs prevent contact damage when unmating the connector from a header; the housing cannot be twisted off pins

Physical

Housing: Black glass-filled polyester, UL 94V-0
Operating Temperature: -40 to +105°C



2.54mm (.100") Pitch

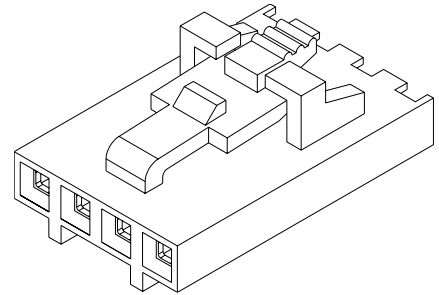
SL™

Crimp Housing

70066

Single Row

Version G, Positive Latch



2.54mm (.100") Pitch

Reference Information

Product Specification: PS-70058

Packaging: Bag

UL File No.: E29179

CSA File No.: LR19980

Mates With: 70018, 70107A/B, 70541, 70543, 70545,

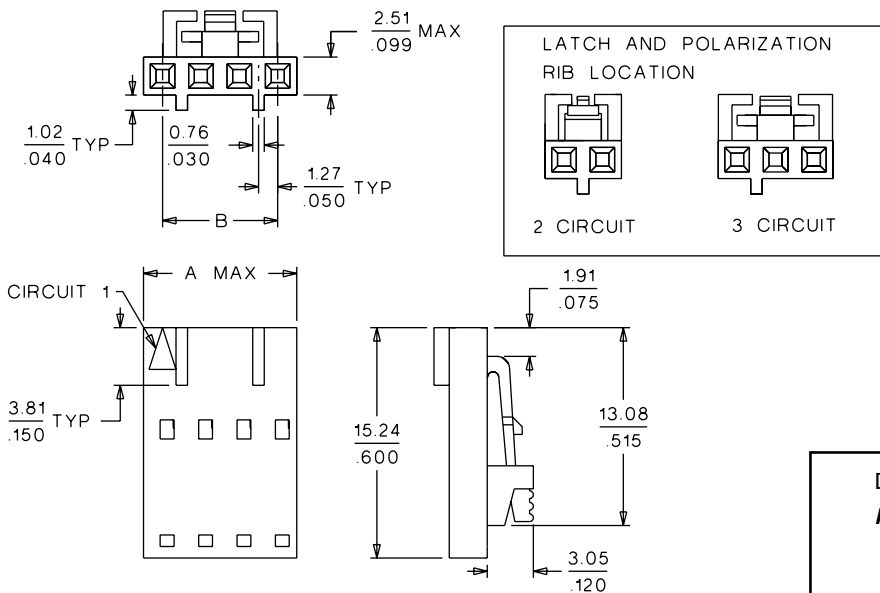
70551, 70553, 70555 and 70634

Use With: 70058 and 71851 crimp terminals


Designed In: Inches

CATALOG DRAWING (FOR REFERENCE ONLY)

Not For Use With C-Grid III™ Components



Delivered on a carrier with 20 pieces per strip.

Actual Size  **Universal Polarizing Pin 40713-1**
Order No. 15-04-0292

ORDERING INFORMATION AND DIMENSIONS

Circuits	Order No.	Dimension	
		A	B
2	• 50-57-9402	5.05 (.199)	2.54 (.100)
3	• 50-57-9403	7.59 (.299)	5.08 (.200)
4	• 50-57-9404	10.13 (.399)	7.62 (.300)
5	• 50-57-9405	12.67 (.499)	10.16 (.400)
6	• 50-57-9406	15.21 (.599)	12.70 (.500)
7	• 50-57-9407	17.75 (.699)	15.24 (.600)
8	• 50-57-9408	20.29 (.799)	17.78 (.700)
9	• 50-57-9409	22.83 (.899)	20.32 (.800)
10	• 50-57-9410	25.37 (.999)	22.86 (.900)
11	• 50-57-9411	27.91 (1.099)	25.40 (1.000)
12	• 50-57-9412	30.45 (1.199)	27.94 (1.100)
13	• 50-57-9413	32.99 (1.299)	30.48 (1.200)

Circuits	Order No.	Dimension	
		A	B
14	• 50-57-9414	35.53 (1.399)	33.02 (1.300)
15	• 50-57-9415	38.07 (1.499)	35.56 (1.400)
16	• 50-57-9416	40.61 (1.599)	38.10 (1.500)
17	• 50-57-9417	43.15 (1.699)	40.64 (1.600)
18	• 50-57-9418	45.69 (1.799)	43.18 (1.700)
19	• 50-57-9419	48.23 (1.899)	45.72 (1.800)
20	• 50-57-9420	50.77 (1.999)	48.26 (1.900)
21	• 50-57-9421	53.31 (2.099)	50.80 (2.000)
22	• 50-57-9422	55.85 (2.199)	53.34 (2.100)
23	• 50-57-9423	58.39 (2.299)	55.88 (2.200)
24	• 50-57-9424	60.93 (2.399)	58.42 (2.300)
25	• 50-57-9425	63.47 (2.499)	60.96 (2.400)

• US Standard Product, available through Molex franchised distributors