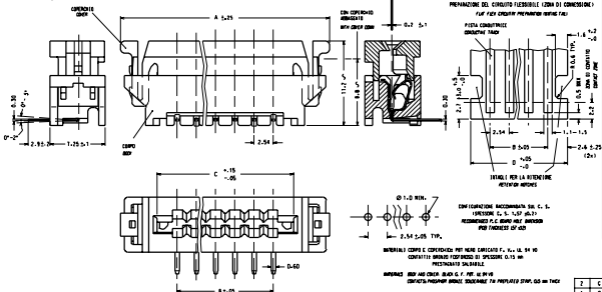


COPERTI ALZATI I CONTATTI SONO APERTI PER UN AGEVILE INSERIMENTO DEL CIRCUITO FLESSIBILE  
COVER UP CONTACTS ARE OPEN FOR AN EASY INSERTION OF THE FLEX CIRCUIT

COPERTI ABBASSATI I CONTATTI SONO PRESATI CONTRO LE PISTE  
COVER DOWN CONTACTS ARE CLOSED ON THE TABS

CIRCUITO FLESSIBILE (SPESORE TYPICO)  
FLEX CIRCUIT (TYPICAL THICKNESS)

PREPARAZIONE DEL CIRCUITO FLESSIBILE (ZONA DI CONNESSIONE)  
FLEX CIRCUIT PREPARATION (CONNECTION ZONE)



NOTE: 1) IL PRODOTTO VIENE FORNITO IN TUBI (REEL) FORNITO 2/21  
2) CARATTERISTICHE TECNICHE E FUNZIONALI CONE DA SE NOSTRO.  
LUNGEZZA MINIMA DI ESPOSIZIONE DELLE PISTE

NOTE: 2) PRODUCT WILL BE SUPPLIED PACKAGED IN A TUBE (REEL) SUPPLY 2/21  
IN TECHNICAL CHARACTERISTICS AS INDICATED IN PROCEED.  
MINIMUM EXPOSED LENGTH OF TABS

STD. DESCR. PFC CORR. R# (insert contact number) (X1)

EC NO. Z2000-0077 DIMENSIONI: 28-11-91 CHINA, TEMPERATURE: 20-11-91 APPROV. N. Mod. Num. 20-11-91	QUALITY SYMBOLS 	GENERAL TOLERANCES UNLESS SPECIFIED FRAZ. INCH 4 PLACES ±0.1 2 PLACES ±0.05 1 PLACE ±0.1 ANG. max. 1/2°	DESIGN UNITS DIMENSIONAL SYSTEM DRAWN BY & DATE BORIS/1 09-09-93 CHECKED BY & DATE PAVLOV/0 09-09-93 CAD FILENAME 10100000.DGN	SCALE 5:1 FIRST ANGLE PROJECTION TITLE CONNETTORI PER CIRCUITI FLESSIBILI DI SPESORE 0.15 ± 0.03 E PISTE 2.54 (0.100) DI SPESORE PFC CONNECTOR FOR FLEX PCB PRINT BOARD HOLE MOUNT	DIMENSIONS <input type="checkbox"/> DIM. INCH <input type="checkbox"/> DIM. METR. <input type="checkbox"/> DIM. INCH <input type="checkbox"/> DIM. METR. REVISION ON CAD ONLY
	MOLDING MATERIALS BODY AND COVER: NYLON 6/6, UL 94 V0 CONTACTS: PHOSPHOR BRASS, SODDEGNATE PER PRELAPATO STAMP. 0.5 mm THICK	APPROVED BY & DATE PAVLOV/0 09-09-93	MATERIAL NO. DRAWING NO. SEE SHEET 2	MOLEX INCORPORATED 50-9600-000 SHEET NO. 1/2	

THIS DRAWING CONTAINS INFORMATION THAT IS PROPRIETARY TO MOLEX INCORPORATED AND SHOULD NOT BE USED WITHOUT WRITTEN PERMISSION.

N° DI CODICE PART. AD.	ATTREZZAGGIO TOOLING	N° VIE OCT. AD.	DIM "A"	DIM "B"	DIM "C"	DIM "D"	N° CONN./TUBO CONN. NO./TUBE	N° CONN./SCATOLA CONN. NO./BOX /SPD
90500-4002	NON ATTREZZATO NOT TOOLED	2						
90500-4003	-	3						
90500-4004	ATTREZZATO TOOLED	4	22.52	7.62	12.92	12.82	24	3456
90500-4005	"	5	25.06	10.16	15.46	15.36	21	3024
90500-4006	"	6	27.60	12.70	18.00	17.90	19	2136
90500-4007	"	7	30.14	15.24	20.54	20.44	11	2448
90500-4008	"	8	32.68	17.78	23.08	22.98	16	2304
90500-4009	"	9	35.22	20.32	25.62	25.52	15	2160
90500-4010	"	10	37.76	22.86	28.16	28.06	14	2016
90500-4011	"	11	40.30	25.40	30.70	30.60	13	1872
90500-4012	"	12	42.84	27.94	33.24	33.14	12	1728
90500-4013	"	13	45.38	30.48	35.78	35.68	11	1584
90500-4014	"	14	47.92	33.02	38.32	38.22	11	1584
90500-4015	"	15	50.46	35.56	40.86	40.76	10	1440
90500-4016	"	16	53.00	38.10	43.40	43.30	10	1440
90500-4017	"	17	55.54	40.64	45.94	45.84	9	1296
90500-4018	"	18	58.08	43.18	48.48	48.38	9	1296
90500-4019	"	19	60.62	45.72	51.02	50.92	8	1152
90500-4020	"	20	63.16	48.26	53.56	53.46	8	1152

EC NO. SEE SHEET 1/2 DRAWN: CHN CHKD: APRN	QUALITY SYMBOLS MAGN. SIGNIF. CRITICAL	GENERAL TOLERANCES UNLESS SPECIFIED	SCALE 5:1	DESIGN UNITS DIMM DIM	FIRST ANGLE PROJECTION	DIMENSIONS: <input type="checkbox"/> DIM INCH <input type="checkbox"/> DIM FEET <input type="checkbox"/> DIM ONLY	REV								
		<table border="1"> <tr> <td>FINISH</td> <td>INCH</td> </tr> <tr> <td>4 PLACES <math>\pm 0.</math></td> <td>1.</td> </tr> <tr> <td>3 PLACES <math>\pm 0.</math></td> <td>1.</td> </tr> <tr> <td>2 PLACES <math>\pm 0.05</math></td> <td>1.</td> </tr> <tr> <td>1 PLACE <math>\pm 0.1</math></td> <td>1.</td> </tr> </table>	FINISH	INCH		4 PLACES $\pm 0.$	1.	3 PLACES $\pm 0.$	1.	2 PLACES $\pm 0.05$	1.	1 PLACE $\pm 0.1$	1.	DRAWN BY & DATE Borcher 09-09-93	TITLE CONSTRUCTION FOR CRASH111 FLEXIBLE BI SYSTEM BL-40.5 8 PAGES 5/44 1/80. DIMENSIONAL AT 0.000000 254 1/80 1/80 1/80 - 4047 4048 4049 -
FINISH	INCH														
4 PLACES $\pm 0.$	1.														
3 PLACES $\pm 0.$	1.														
2 PLACES $\pm 0.05$	1.														
1 PLACE $\pm 0.1$	1.														
		APPROVED BY & DATE Pavani 09-09-93	CAD FILENAME 90500006_501	MATERIAL NO.	DRAWING NO.	SIZE A 1									

DRAWN WHERE APPLICABLE MUST  
INCLUDE WITH DIMENSIONS

THIS DRAWING CONTAINS INFORMATION THAT IS PROPRIETARY TO MOLEX  
INCORPORATED AND SHOULD NOT BE USED WITHOUT WRITTEN PERMISSION.