

T10C series Sibod™ Sibod™

3 Terminal configuration, matches G.D.T. pin configuration
For Plug in Applications, fits in KRONE™ 3 Point Connector Block (5B).

FEATURES

- Glass passivated junction
- High current diverting capability, 250A
- Low capacitance, less than 200pF
- UL recognized
- Automatic reset
- Does not degrade

APPLICATION

- Bi-directional device for telephone and line card protection

ELECTRICAL CHARACTERISTICS (Tamb = +25°C)

SYMBOL	PARAMETER
V _{RM}	Stand-off Voltage
V _{BR}	Breakdown Voltage
I _H	Holding Current
V _R	Continuous Reverse Voltage.

ABSOLUTE RATINGS (limiting values) (T_j = + 25°C) L = 10mm

SYMBOL	PARAMETER	VALUE	UNIT	
P	Power Dissipation on Infinite Heatsink	Tamb = 50°C	5	W
I _{pp}	Peak Pulse Current	10x1000 μsec 10/700 1.5KV 8-20 μs expo	100 125 250	A
I _{rSM}	Non Repetitive Surge Peak on-state Current	tp = 20 ms	50	A
di/dt	Critical Rate of Rise of on-state Current	Non repetitive	100 A/μS	
T _{stg} T _j	Storage and Operating Junction Temperature Range		-40 to 150 150	°C °C

THERMAL RESISTANCES

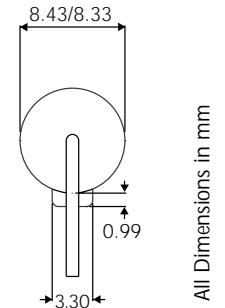
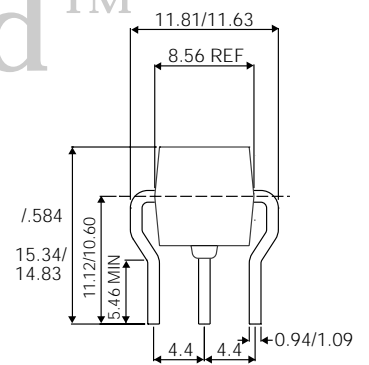
SYMBOL	PARAMETER	VALUE	UNIT
R _{th(j-i)}	Junction-leads on Infinite Heatsink L = 10mm	60	°C/W

All parameters are tested using Fet Test™ Model 3600

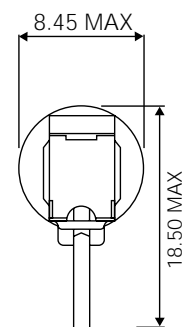
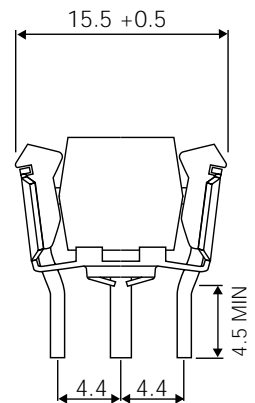
DEVICE TYPE	V _{RM} (Volts)	I _{RM} @ V _{RM} (μA)	V _{BR} MIN @ 1mA (Volts)	V _{BO} MAX (Volts)	V _T TYP @ 1A (Volts)	I _{BO} TYP (mA)	I _H MIN (mA)
T10C80	70	1	80	120	2V	50	B or E
T10C110	100	1	110	135	2V	50	B or E
T10C140	120	1	140	170	2V	50	B or E
T10C180	170	1	180	210	4V	50	B or E
T10C220	200	1	220	265	4V	50	B or E
T10C270	240	1	270	360	4V	50	B or E

MINIMUM HOLDING CURRENTS I_H MIN

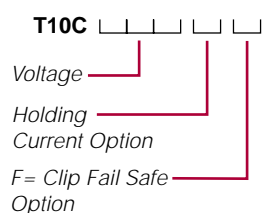
SUFFIX	I _H
B	120
E	180



(WITH FAILSAFE)



ORDERING INFORMATION



All products are sold to the commercial specifications shown, for any additional reliability testing or extended parameters, please consult the factory.

contact semitron on: telephone: +44 (0)1793 724000 fax: +44 (0)1793 720401