

# 8000 series

## Momentary or alternate action pushbutton switches

*Distinctive features and specifications*



Bushing  $\varnothing$  6,35 (1/4) and  $\varnothing$  11,9 (15/32)

UL approved

### ELECTRICAL SPECIFICATIONS

- Max. current/voltage rating with resistive load :
  - silver contacts : 3A 250VAC - 6A 125VAC - 4A 30VDC
  - gold plated contacts : 0,4VA max. 20VAC or DC
- Initial contact resistance : 10 m $\Omega$  max.
- Insulation resistance : 1.000 M $\Omega$  min. at 500VDC
- Dielectric strength :
  - 1.000 Vrms 50 Hz min. between terminals
  - 2.000 Vrms 50 Hz min. between terminals and frame
- Electrical life : 30.000 cycles at full load

### MATERIALS

- Case : diallylphthalate (DAP)
- Actuator : brass, nickel plated
- Bushing : brass, nickel plated
- Housing : stainless steel
- Contacts
  - A : silver
  - AD : silver, gold plated
  - CD : brass, gold plated
- Terminal seal : epoxy

### GENERAL SPECIFICATIONS

- Torque : 1,25 Nm (.922 Ft.lb) max. applied to nut
- Total travel : 2,70 mm (.106)
- Operating temperature : -40°C to +85°C

### AGENCY APPROVAL



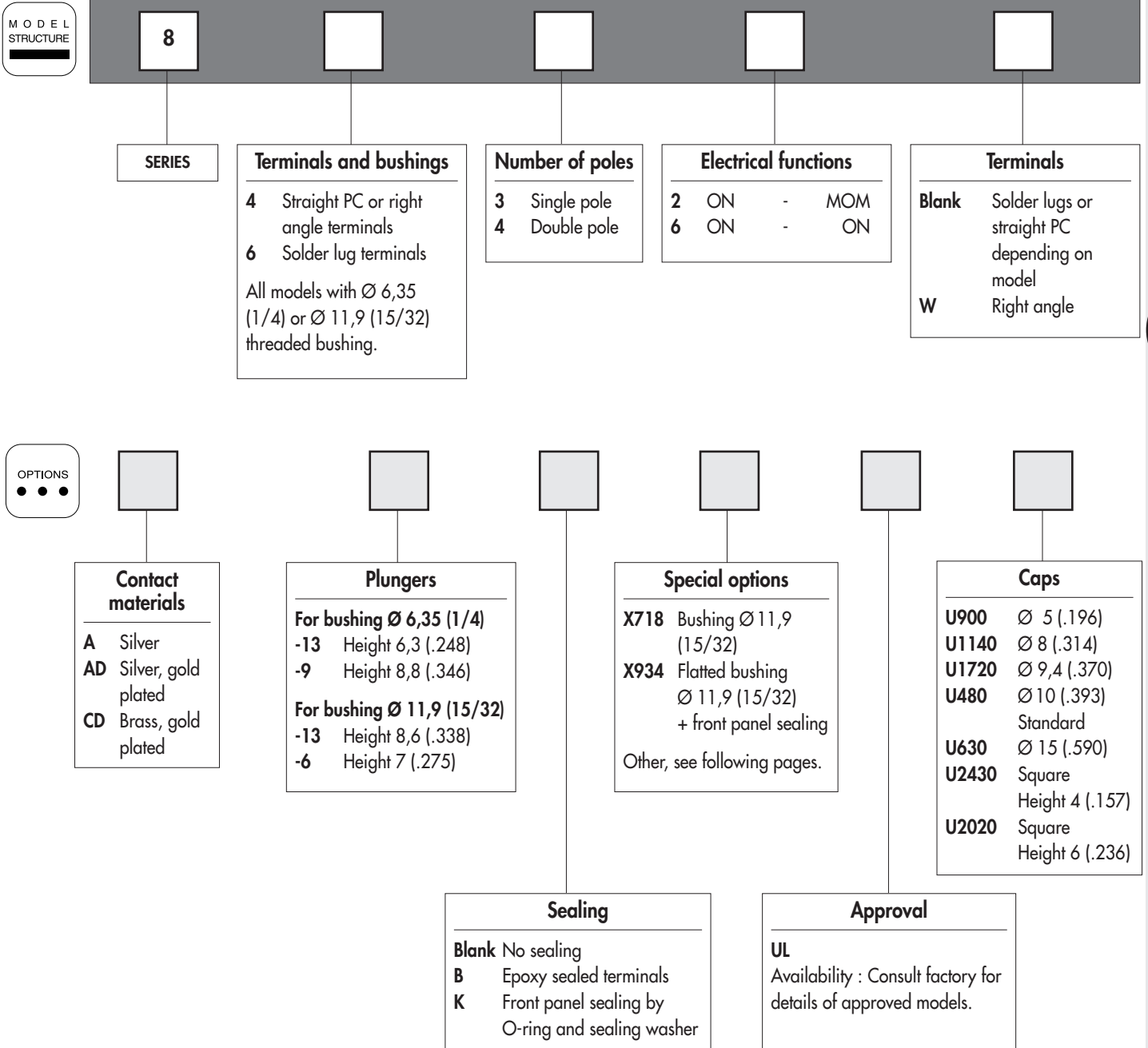
**Availability** : consult factory for details of approved models.

**Marking** : to order switches marked UL, complete appropriate box of ordering format.

# 8000 series

## Momentary or alternate action pushbutton switches

Overview



### ABOUT THIS SERIES

On the following pages, you will find successively :

- model structure of switches
- options in the same order as in above chart

**Dimensions** : first dimensions are in mm while inches are shown as bracketted numbers.



**Sealing boots** are available to protect the switches against dust and water. They are presented in section H.



**Mounting accessories** : standard hardware supplied with all models : 2 hex nuts 8 mm (.314) across flats, 1 locking ring and 1 lockwasher.

Standard and special hardware available are presented in section I.



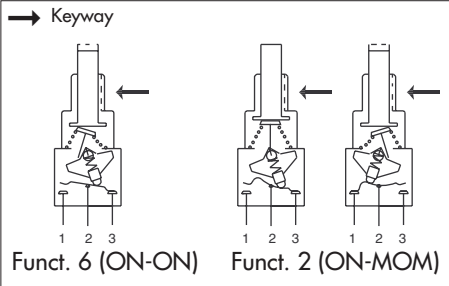
**Packaging unit** : 50 pieces, except 8000W (25 pieces).

# 8000 series

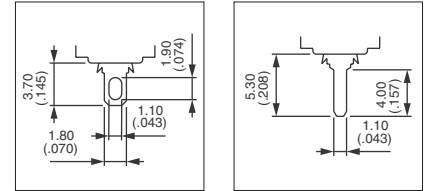
## Momentary or alternate action pushbutton switches

Threaded bushing  $\varnothing 6,35$  (1/4)

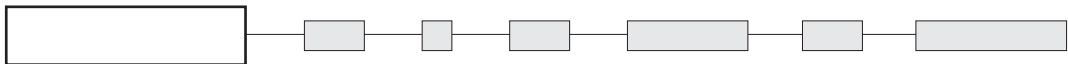
MODEL  
STRUCTURE



- Solder lug, straight PC or right angle terminals
- 1 and 2 pole configurations
- Button returns in upper position after actuation.



MODEL  
STRUCTURE



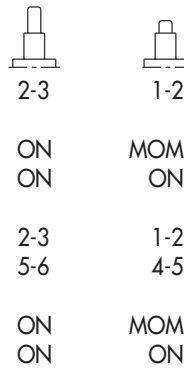
Shown with standard plunger (-13)

### Solder lug terminals : 8600

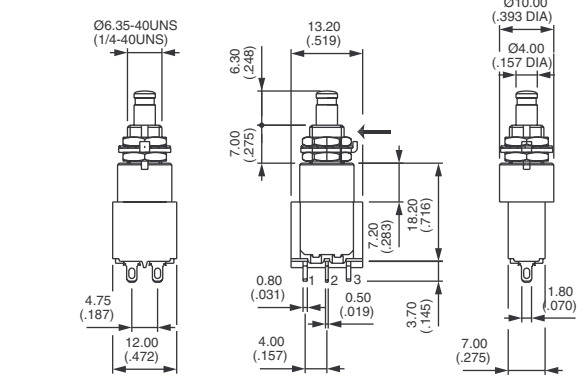


Single pole  
**8632**  
**8636**

Double pole  
**8642**  
**8646**



→ Keyway

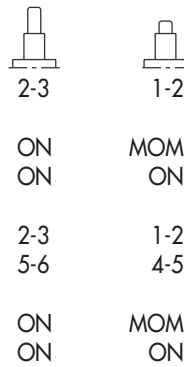


### Straight PC terminals : 8400

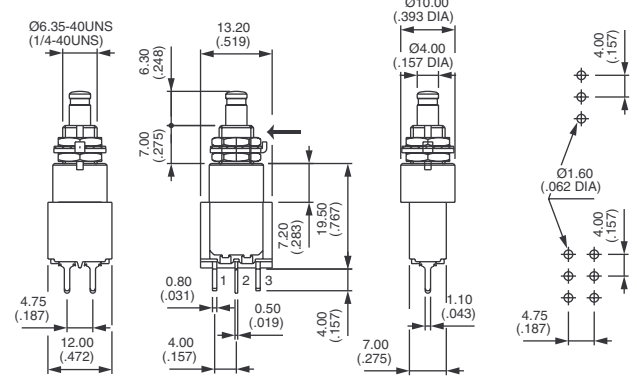


Single pole  
**8432**  
**8436**

Double pole  
**8442**  
**8446**



→ Keyway

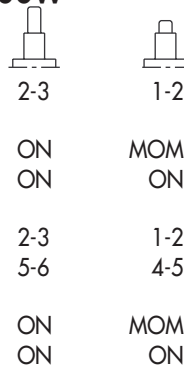


### Right angle terminals - horizontal : 8400W

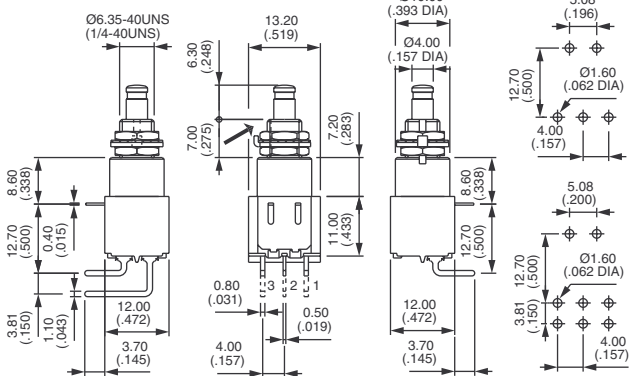


Single pole  
**8432W**  
**8436W**

Double pole  
**8442W**  
**8446W**



→ Keyway

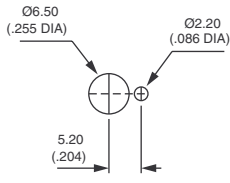




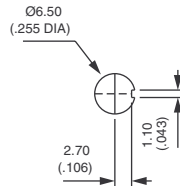
# 8000 series

Momentary or alternate action pushbutton switches

## PANEL CUT-OUT

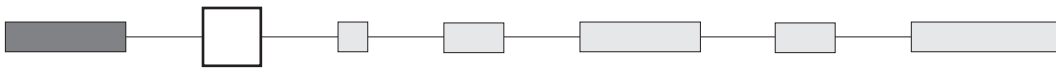


Standard



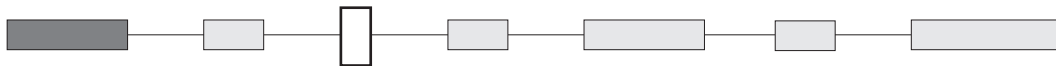
With K sealing option

## CONTACT MATERIALS



- A Silver
- AD Silver, gold plated
- CD Brass, gold plated

## SEALING



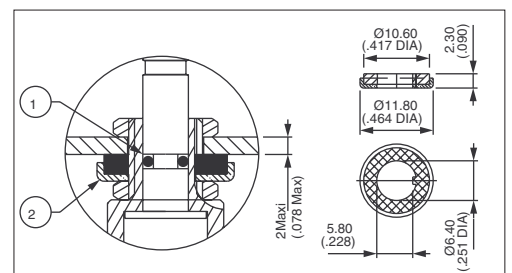
- Blank No sealing
- B Epoxy sealed terminals



- K Front panel sealing by one O-ring and sealing washer. Protects the switch against water and dust. Panel seal withstands 1 bar pressure and remains sealed even when switch is operated.

- KB Combined sealings

Sealing boot : see section H.



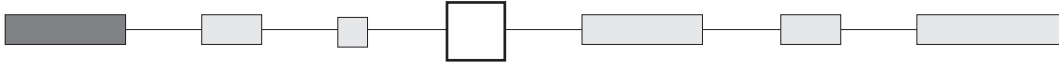
- ① O-ring
- ② Sealing washer

# 8000 series

Momentary or alternate action pushbutton switches

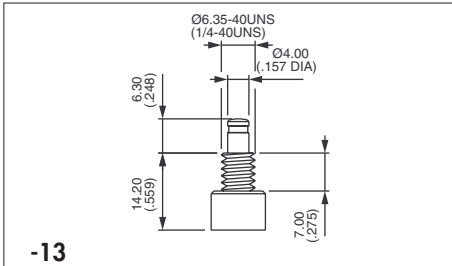


## PLUNGERS

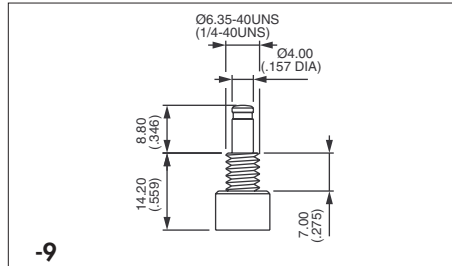


For  $\varnothing 6,35$  (1/4) bushing

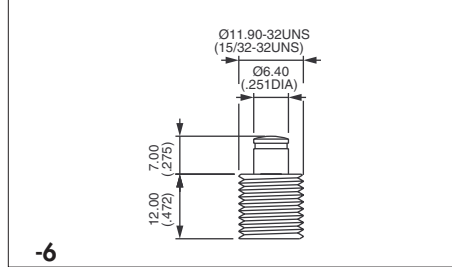
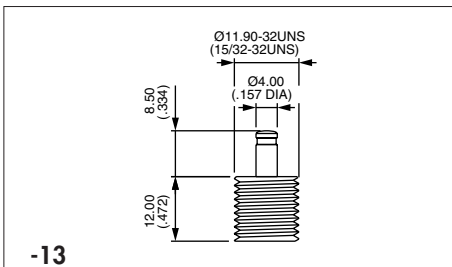
Dash compulsory before plunger code.



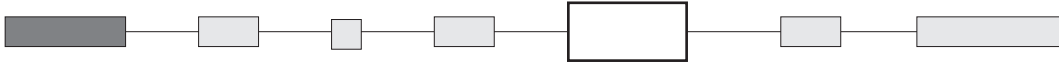
Standard



For  $\varnothing 11,9$  (15/32) bushing (X718 models)

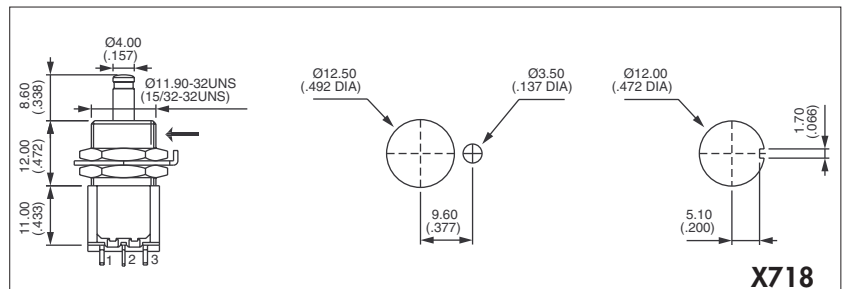


## SPECIAL OPTIONS



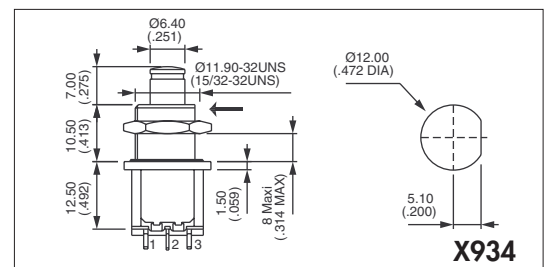
**X601 Silver plated brass contacts**  
 Current/voltage rating for an electrical life of 20.000 cycles :  
 0,2A 250VAC - 0,4A 125VAC - 0,5A 30VDC.  
 Minimum quantity : 5.000 pieces per model and shipment.

**X718 Bushing  $\varnothing 11,9$  (15/32)**  
 For all basic models (solder lug straight PC or right angle terminals)  
 Available with plungers 13 and 6.  
 K sealing option available.



**X748 Snap-in mounting.** Consult factory  
 Panel cut-out 15 x 12,5 (.59 x .492)

**X934 Flatted bushing  $\varnothing 11,9$  (15/32) + sealing by two O-rings**  
 (for plunger -6 only)



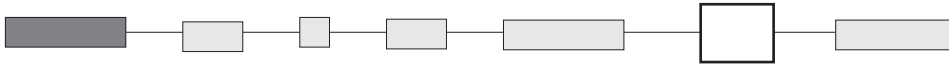
**F Tin dipped terminals**  
 For PC terminal models with gold plated contacts only.  
 Order with option B (epoxy sealing).



# 8000 series

## Momentary or alternate action pushbutton switches

### APPROVAL

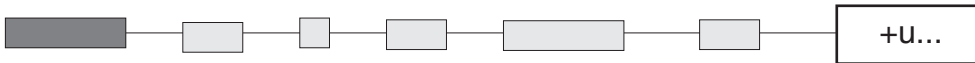


### UL

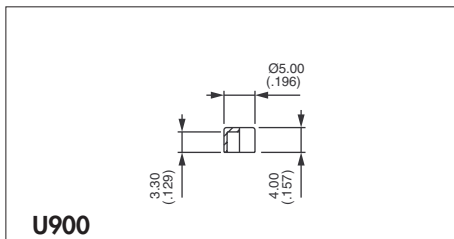
**Availability** : consult factory for details of approved models.

**Marking** : to order switches marked UL, complete above box with "UL".

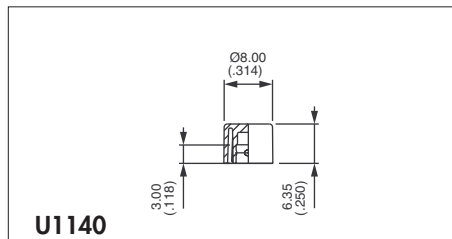
### CAPS



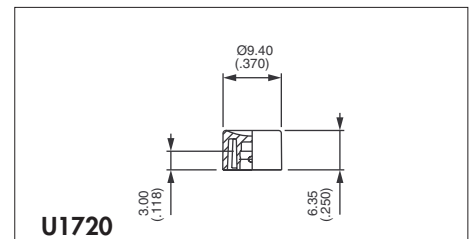
The caps below are for Ø 4 mm plungers (-13 and -9), except U2600.



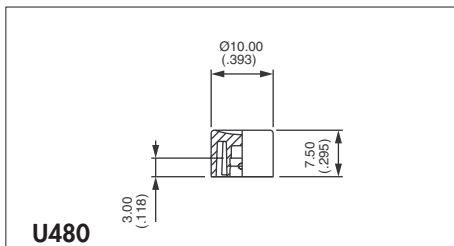
**U900**



**U1140**

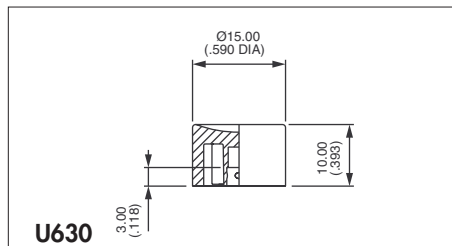


**U1720**



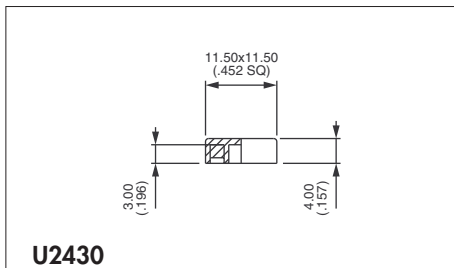
**U480**

Standard



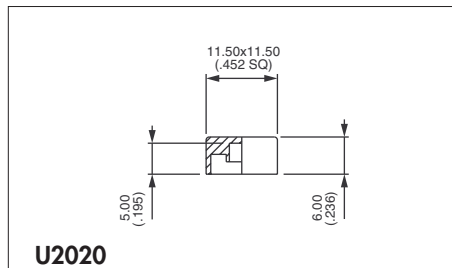
**U630**

Cap colours	
Replace last "0" by number	
1	blue
1/4	dark blue
2	black
3	green
4	grey
5	yellow
6	red
7	ivory
7/1	white
9	orange



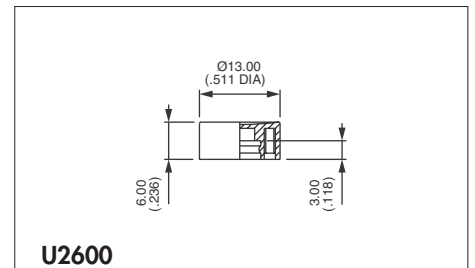
**U2430**

Square



**U2020**

Square

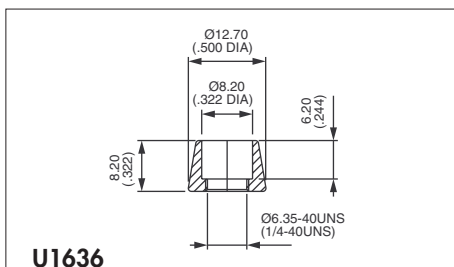


**U2600**

For large plunger -6 only.

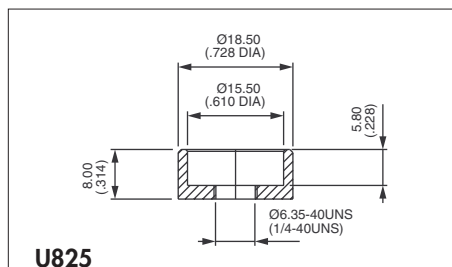
### DRESS NUTS

Chrome plated. Order separately.



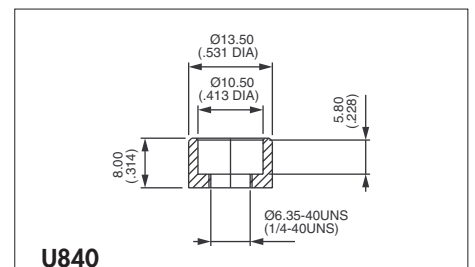
**U1636**

For cap U1140



**U825**

For cap U630



**U840**

For cap U480