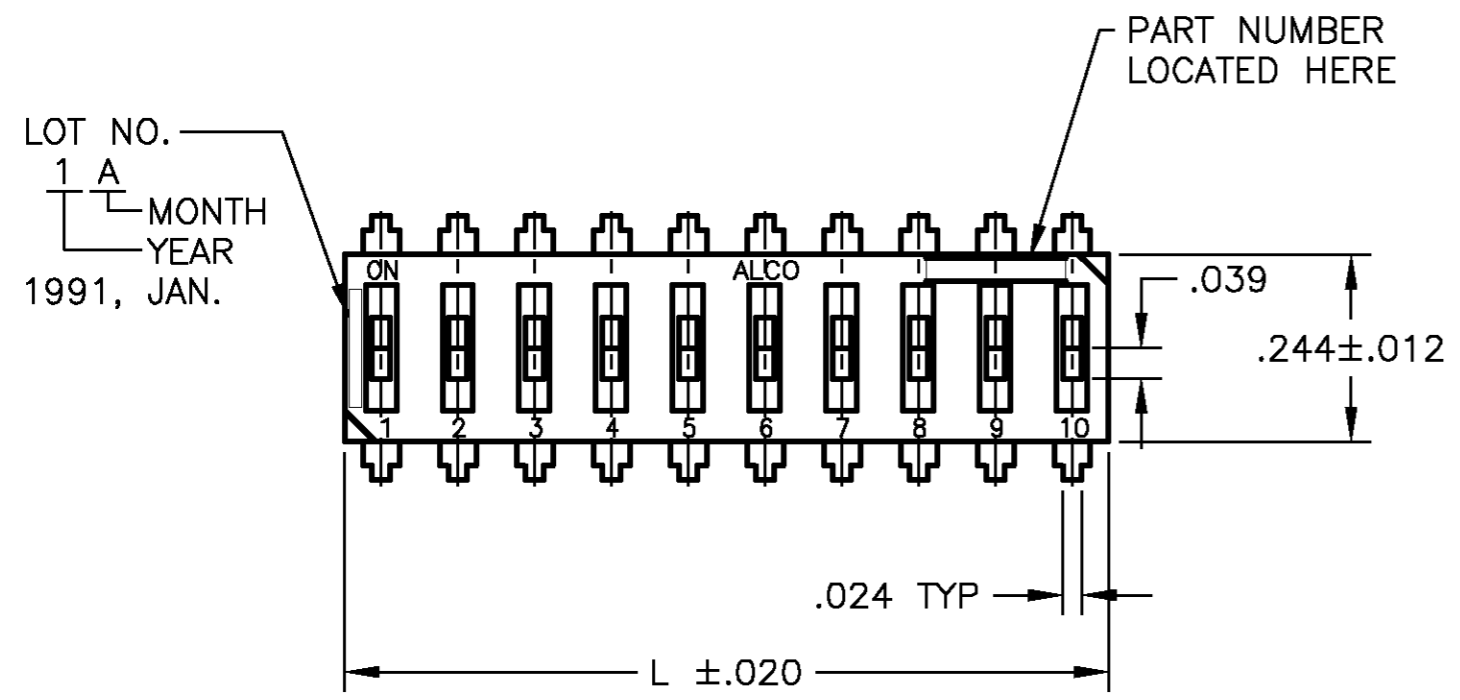


THIS DRAWING IS UNPUBLISHED. RELEASED FOR PUBLICATION  
 © COPYRIGHT BY TYCO ELECTRONICS CORPORATION. ALL RIGHTS RESERVED.

LOC	DIST	REVISIONS			
P	LTR	DESCRIPTION	DATE	DWN	APVD
AD	00	A	REV OG3C-0285-02	11DEC02	RB MS



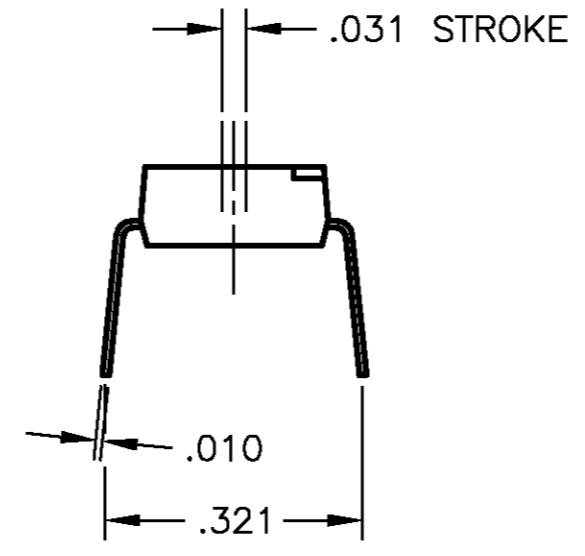
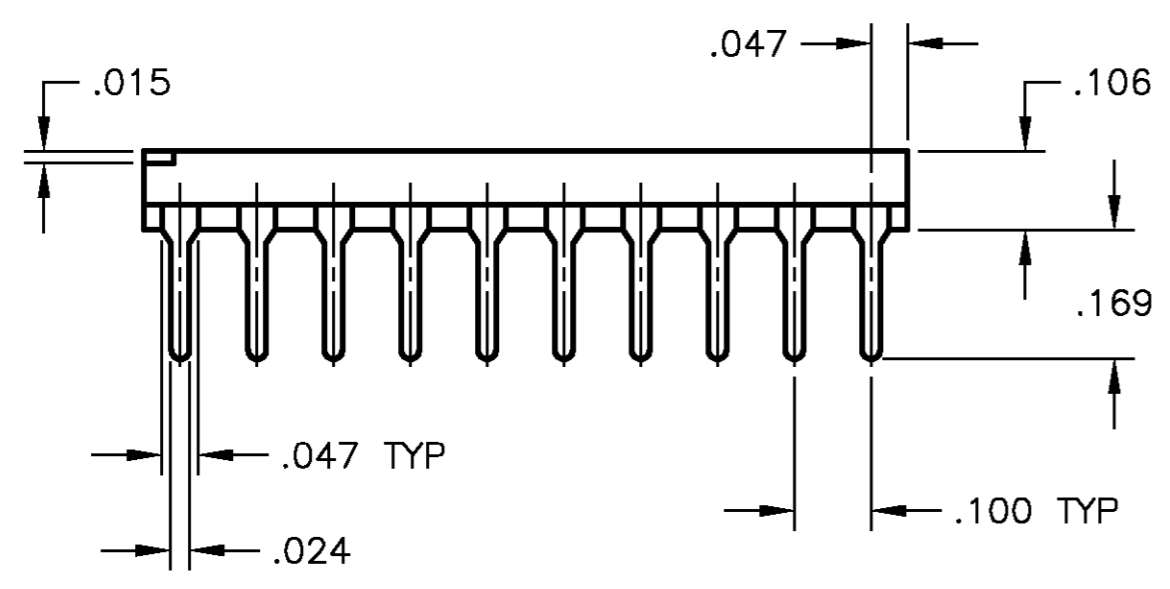
**SPECIFICATIONS:**

**MATERIALS:**  
 CASE: PPS  
 COVER: PPS  
 ACTUATOR: HIGH TEMPERATURE POLYESTER  
 MOVING CONTACT: GOLD OVER NICKEL OVER COPPER ALLOY  
 FIXED CONTACT: GOLD OVER NICKEL OVER COPPER ALLOY  
 TERMINALS: 90/10 TIN-LEAD OVER NICKEL OVER COPPER ALLOY

**ELECTRICAL:**  
 CONTACT RATING: NON-SWITCHING: 100mA @ 50VDC  
 SWITCHING: 25mA 24VDC  
 INITIAL CONTACT RESISTANCE: 100 MILLIOHMS MAX. @ 2VDC, 10mA  
 INSULATION RESISTANCE: 100 MEGOHMS MIN. @ 100VDC  
 DIELECTRIC STRENGTH: 300VAC FOR 1 MINUTE  
 LIFE EXPECTANCY: 1000 CYCLES

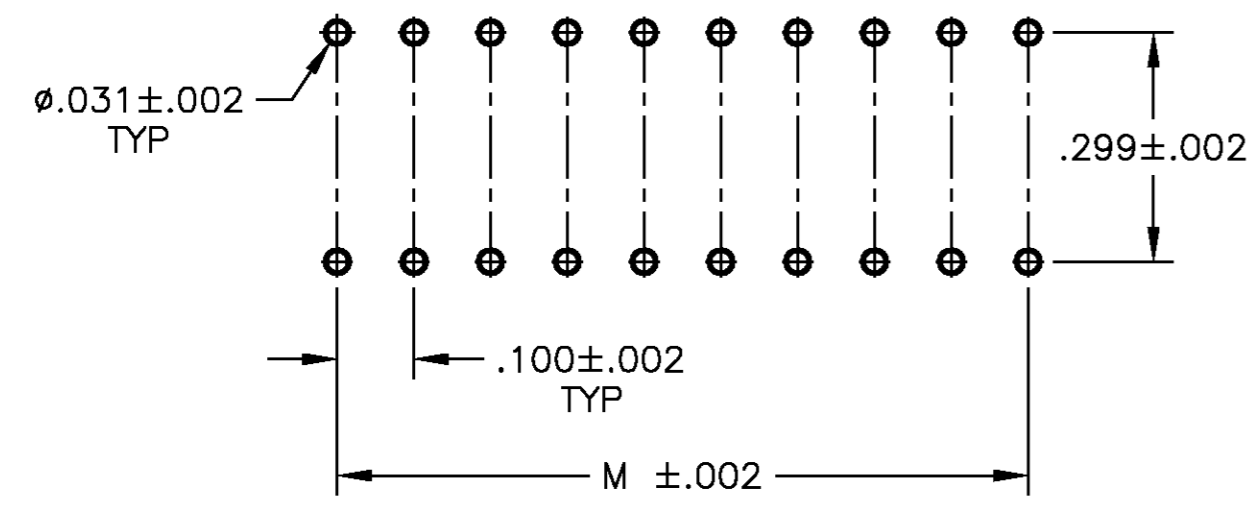
**MECHANICAL:**  
 ACTUATION FORCE: 60-600 GRAMS

**ENVIRONMENTAL:**  
 OPERATING TEMPERATURE: -49°F TO +212°F (-45°C TO +100°C)



**NOTES:**

1. INTERPRET DRAWING PER ASME Y14.5M-1994.
2. SUPPLIED WITH TAPE SEAL STANDARD.
3. TAPE AND REEL PACKAGING PER EIA 481 - PART NO.S GDSXXSTR.



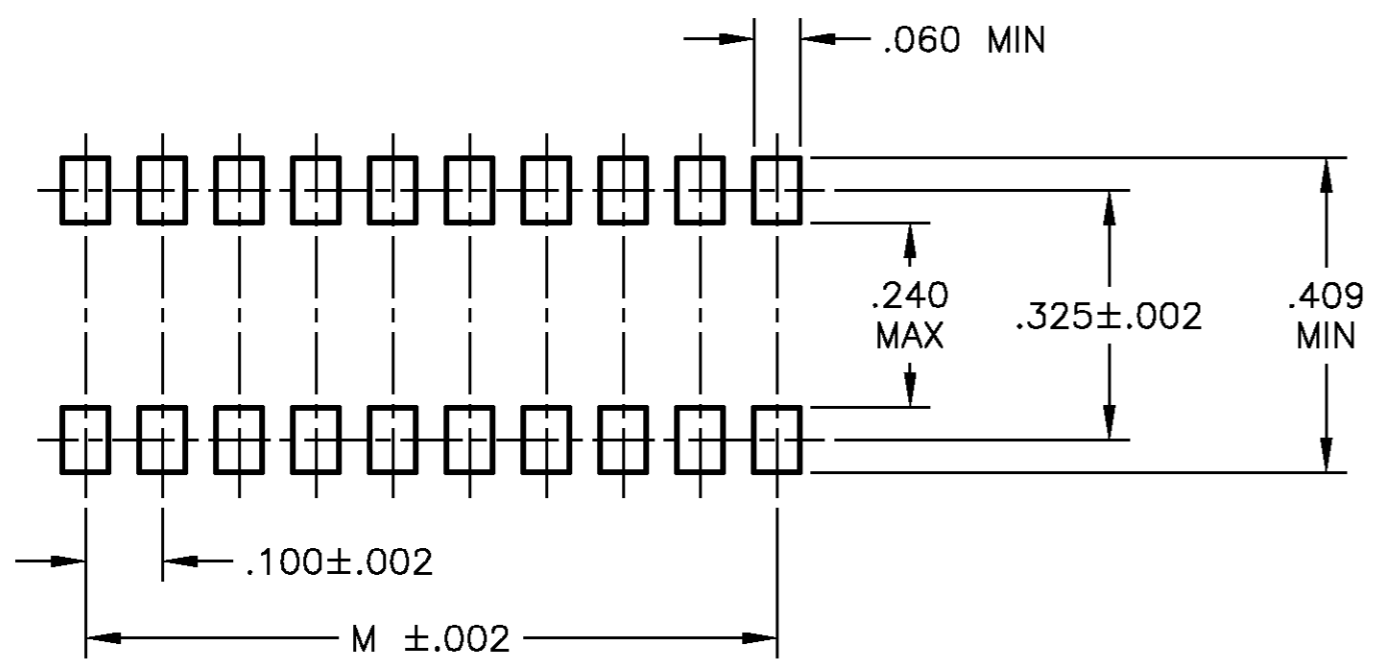
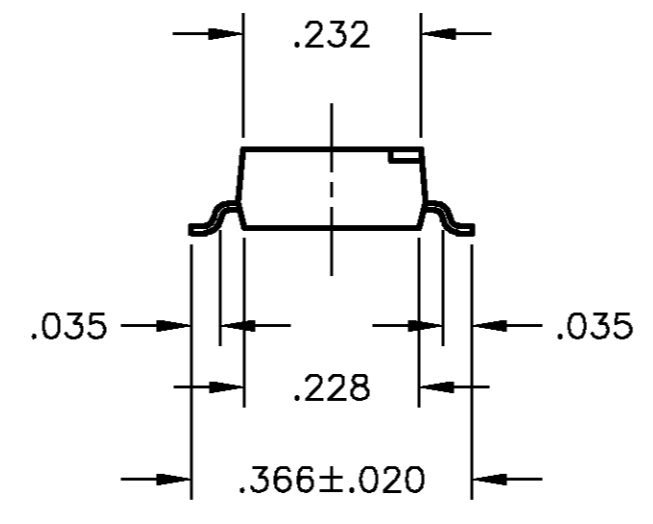
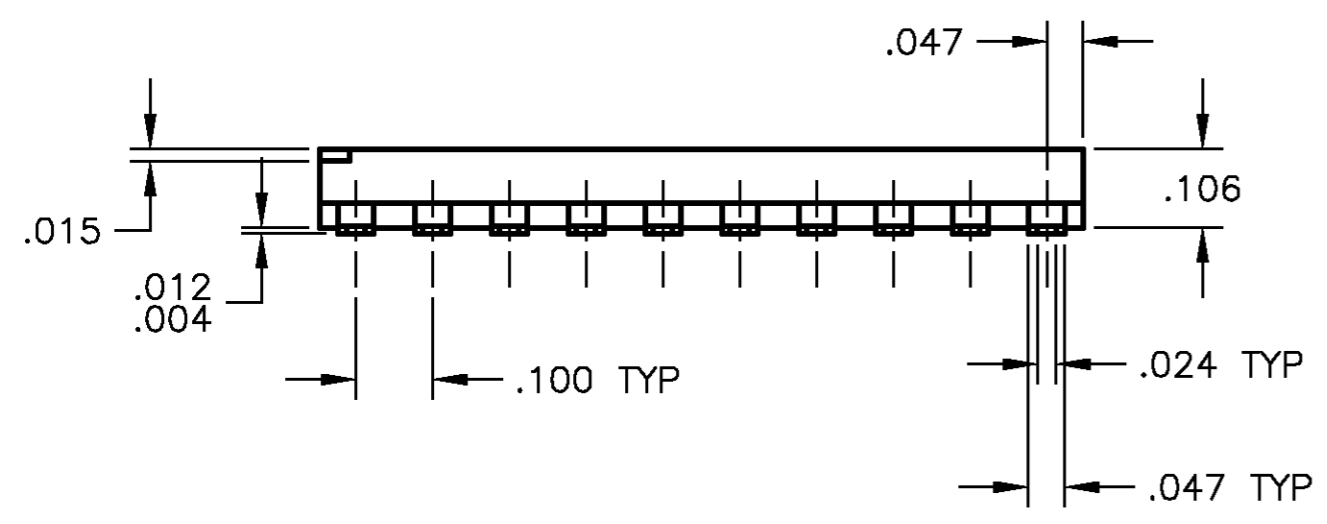
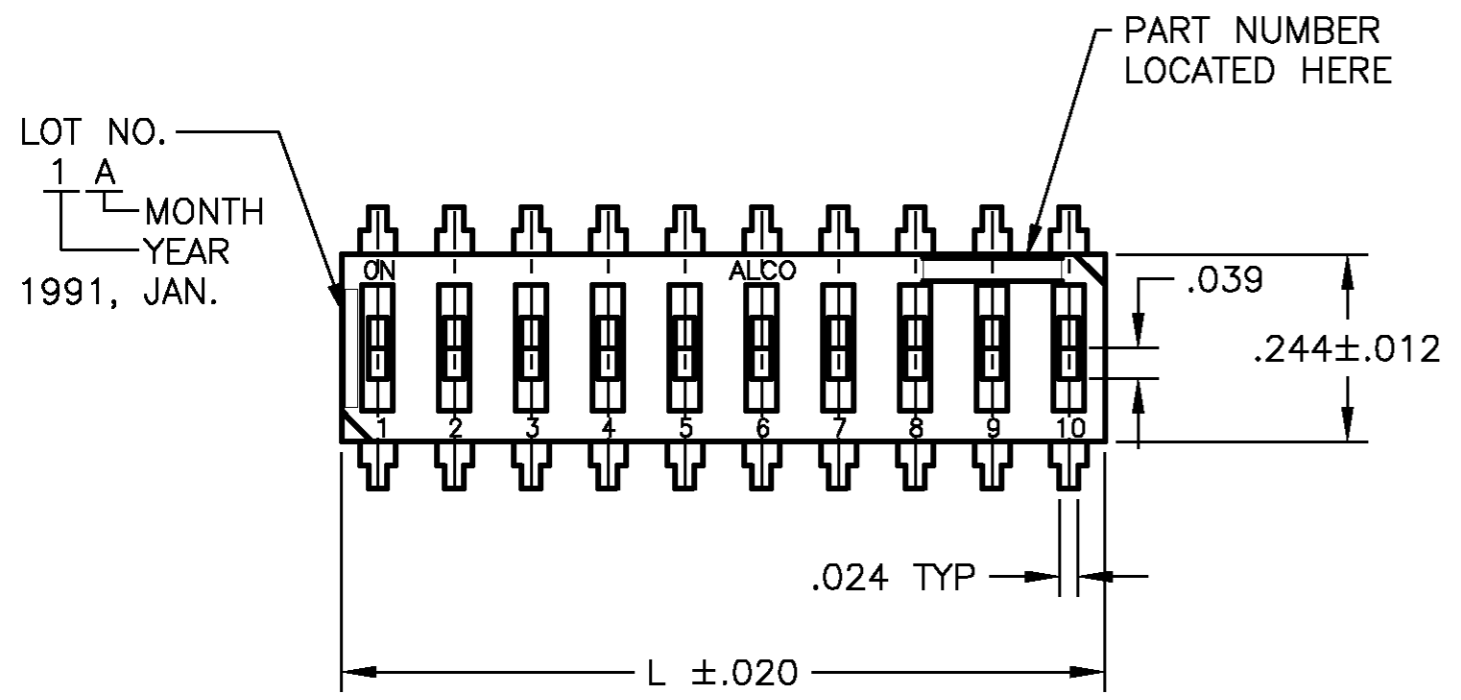
P.C.B. HOLE LAYOUT

MODEL	POLE	DIM L	DIM M	
GDS02S	GDS02	2	.194	.100
GDS04S	GDS04	4	.394	.300
GDS06S	GDS06	6	.594	.500
GDS08S	GDS08	8	.794	.700
GDS10S	GDS10	10	.994	.900

THIS DRAWING IS A CONTROLLED DOCUMENT.		DWN R BROWN 11DEC02	Tyco Electronics Corporation Harrisburg, PA
DIMENSIONS: INCHES		GHK M SARVER 11DEC02	
TOLERANCES UNLESS OTHERWISE SPECIFIED:		APVD M SARVER 11DEC02	NAME DIP SWITCH ASSEMBLY GDS SERIES
0 PLC ± - 1 PLC ± - 2 PLC ± - 3 PLC ± .010 4 PLC ± - ANGLES ± 1°		PRODUCT SPEC	
MATERIAL		APPLICATION SPEC	SIZE A2
FINISH		WEIGHT	CAGE CODE 00779
		CUSTOMER DRAWING	DRAWING NO 5-1437590-9
		SCALE 4:1	RESTRICTED TO
		SHEET 1 OF 2	REV A

THIS DRAWING IS UNPUBLISHED. RELEASED FOR PUBLICATION  
 © COPYRIGHT BY TYCO ELECTRONICS CORPORATION. ALL RIGHTS RESERVED.

LDC		DIST		REVISIONS			
P	LTR	DESCRIPTION	DATE	DWN	APVD		
AD	00	A	SEE SHEET 1	-	-		



SURFACE MOUNT PAD LAYOUT

GDS10STR	7-1437590-3
GDS08STR	7-1437590-0
GDS06STR	6-1437590-6
GDS04STR	6-1437590-2
GDS02STR	5-1437590-8
MODEL	TYCO PART NO.

THIS DRAWING IS A CONTROLLED DOCUMENT.		DWN R BROWN 11DEC02	Tyco Electronics Corporation Harrisburg, PA
DIMENSIONS: INCHES		GHK M SARVER 11DEC02	
		APVD M SARVER 11DEC02	NAME DIP SWITCH ASSEMBLY GDS SERIES
TOLERANCES UNLESS OTHERWISE SPECIFIED: 0 PLC ± - 1 PLC ± - 2 PLC ± - 3 PLC ± .010 4 PLC ± - ANGLES ± 1°		PRODUCT SPEC -	APPLICATION SPEC -
MATERIAL -	FINISH -	WEIGHT -	SIZE A2
		CAGE CODE 00779	DRAWING NO. 5-1437590-9
CUSTOMER DRAWING		SCALE 4:1	RESTRICTED TO -
		SHEET 2	OF 2
		REV A	