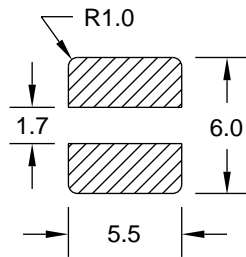
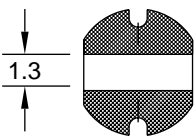
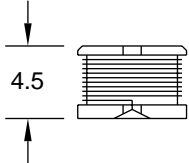
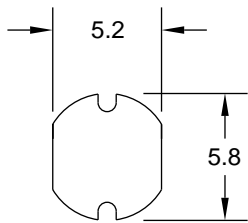


SMT Power Inductors

Special Features

- High current capacity
- Ferrite bobbin core
- Low core loss for high frequency power application
- Compact size
- Large terminal surface for good PCB bonding
- Operating temperature -30 to +100°C
- Current to cause maximum 10% of inductance drop, or 40°C temperature rise
- Tape & reel packaged 1500/reel



Tol: ± 0.35
Dim: mm

Pad Layout

PM54 Series					
Part Number	L (uH) $\pm 20\%$	Test Freq. (MHz)	SRF (MHz) Typ.	DCR (Ω) Max.	I, DC (A)
PM54-100M	10	2.52 MHz	30	0.10	1.44
PM54-120M	12	2.52 MHz	27	0.12	1.40
PM54-150M	15	2.52 MHz	25	0.14	1.30
PM54-180M	18	2.52 MHz	23	0.15	1.23
PM54-220M	22	2.52 MHz	19	0.18	1.11
PM54-270M	27	2.52 MHz	17	0.20	0.97
$\pm 15\%$					
PM54-330L	33	2.52 MHz	16	0.23	0.88
PM54-390L	39	2.52 MHz	15	0.32	0.80
PM54-470L	47	2.52 MHz	13	0.37	0.72
$\pm 10\%$					
PM54-560K	56	2.52 MHz	12	0.42	0.68
PM54-680K	68	2.52 MHz	11	0.46	0.61
PM54-820K	82	2.52 MHz	10	0.60	0.58
PM54-101K	100	1 KHz	9	0.70	0.52
PM54-121K	120	1 KHz	8	0.93	0.48
PM54-151K	150	1 KHz	8	1.10	0.40
PM54-181K	180	1 KHz	6	1.38	0.38
PM54-221K	220	1 KHz	5	1.57	0.35

J.W. Miller
MAGNETICS

306 E. Alondra Blvd., Gardena, CA 90247-1059 • (310) 515-1720 • FAX (310) 515-1962

www.jwmiller.com