

SPECIFICATIONS

RoHS Compliant

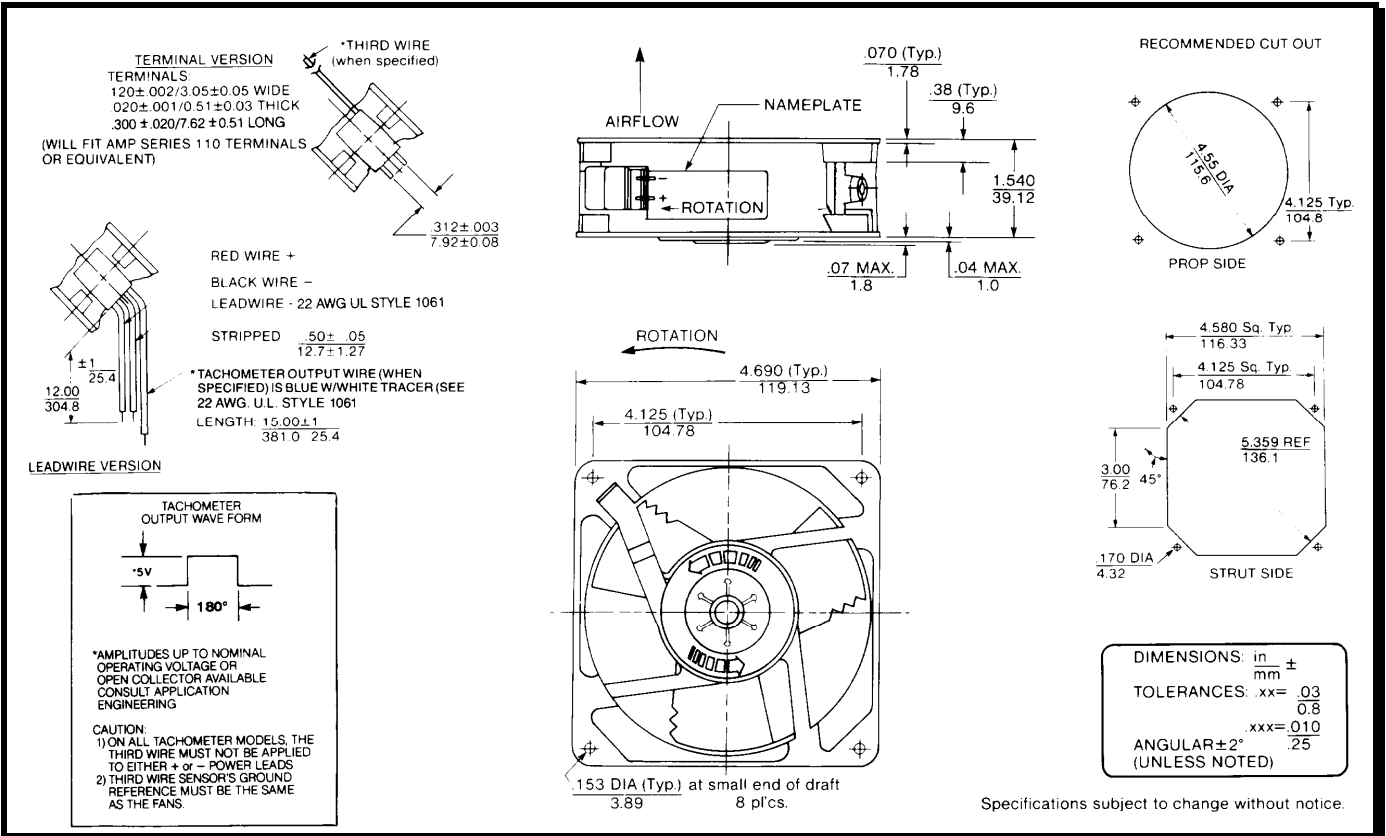
Model Number: WD24B3

Part Number: 030711

October 22, 2001



Mechanical Drawing:



Motor:

Nominal Voltage	= 24 vdc
Operating Voltage Range	= 12 – 28 vdc
Nominal Running Current	= 0.130 amps
Locked Rotor Current	= 0.460 amps
Running Power	= 3.1 watts
Average Speed	= 2475 RPM
Bearings	= Ball
Air Flow	= 85 CFM
Acoustic	= 41.4 dBA

Construction:

Venturi: Die-Cast Zinc Alloy, Black
 Propeller: Plastic, Black, UL 94V-0

Life Expectancy:

This fan is designed for continuous duty life of 83,000 hours at 40°C.

Additional Features:

Brushless DC Motor
 Locked Rotor Protection
 Polarity Protection
 Automatic Restart Capability
 Operating Temperature: -10°C to 70°C
 Storage Temperature: -40°C to 85°C

Termination:

12" Lead wires, 22 AWG, UL 1061
 Red = Power (+)
 Black = Ground (-)

Agency Approvals:

UL