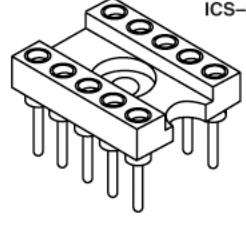
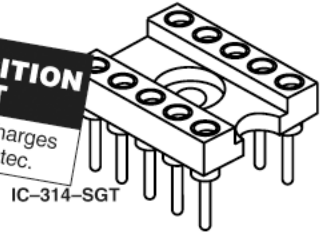




**MOLD-TO-POSITION PRODUCT**  
Minimums or set-up charges may apply. Call Samtec.



# SCREW MOUNT DIP SOCKETS IC & ICS SERIES

Mates with:  
AP, APS, APO,  
APA, APE, APH

## Highest reliability DIP sockets

IC and ICS series DIP sockets feature U.L. rated G.F. polyester body with mounting holes and use precision machined lead sockets for high reliability in the most demanding applications.

## Specifications:

### IC & ICS

Insulator Material: Black Glass Filled Polyester



Flammability Rating: UL 94V-0

Insulation Resistance: 5000 megohm @ 500 VDC

Temperature Range: -55°C to +125°C

Withstanding Voltage: 1000 VRMS @ 60 Hz

Contact: BeCu

Shell: Brass except style K  
Phosphor Bronze

Plating: Au over 50µ" Ni or Sn over 100µ" Cu or 50µ" Ni

Current Rating: 1 amp continuous @ 100 VDC per contact

Contact Resistance: 10 milliohms @ 200 milliamperes

Socket Retention in Body: 5 lbs against barb

Lead Size Range: .015" to .022" DIA and most IC leads

Insertion Force: Standard = 9 oz avg, 16 oz max (.017" DIA probe); Low Insertion Force = 2.5 oz avg, 5.5 oz max (.018" DIA probe)

Withdrawal Force: Standard = 2.5 oz avg, 1.5 oz min (after 12 insertions with .017" DIA probe); Low Insertion Force = 2.0 oz avg, 0.35 oz min (after 12 insertions with .018" DIA probe)

Note: Some sizes, styles and options are non-standard, non-returnable.

**TYPE SOCKET**

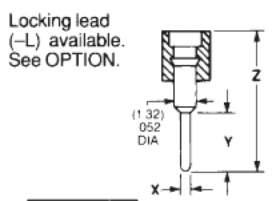
**ROW SPACING & NO. OF CONTACTS**

**IC**  
= IC Socket

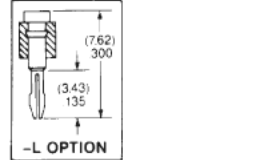
**ICS**  
= IC Socket

**-S\*, -A\*, -J, or -K**  
= Printed Circuit  
\*For LIF Specify -ZS or -ZA

| LEAD STYLE | X DIA          | Y TAIL         | Z              |
|------------|----------------|----------------|----------------|
| -S or -ZS  | (0.51)<br>.020 | (3.18)<br>.125 | (7.62)<br>300  |
| -A or -ZA  | (0.51)<br>.020 | (4.57)<br>.180 | (8.89)<br>350  |
| -J         | (0.64)<br>.025 | (10.41)<br>410 | (15.24)<br>600 |
| -K         | (0.89)<br>.035 | (12.95)<br>510 | (17.86)<br>703 |



Style S, ZS, A, ZA & J Insertion Depth = .095" to .150"  
Style S Component Part No. = SC-1P1  
Style ZS Component Part No. = EZ-1P1  
Style A Component Part No. = SC-6P1  
Style ZA Component Part No. = EZ-6P1  
Style J Component Part No. = SC-1P3  
Option L Insertion Depth = .095" to .150"  
Option L Component Part No. = SC-1L1 or EZ-1L1  
Style K Insertion Depth = .125" to .170"  
Style K Component Part No. = SC-2P1



Low Insertion Force (LIF) Contacts Available.

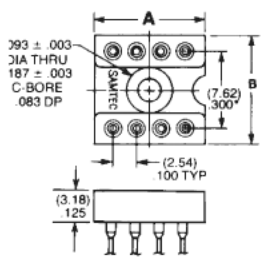
**-306** = .300 Row 6Contacts

**-308** = .300 Row 8 Contacts

**-310** = .300 Row 10 Contacts

| Part No.      | A Length     | B Width      |
|---------------|--------------|--------------|
| IC or ICS-306 | (8.89) .350  | (10.16) .400 |
| IC or ICS-308 | (11.43) .450 | (10.16) .400 |
| IC or ICS-310 | (13.97) .550 | (10.16) .400 |

\* Mounting hole off center on 10 position.



**-314** = .300 Row 14 Contacts

**-316** = .300 Row 16 Contacts

**-318** = .300 Row 18 Contacts

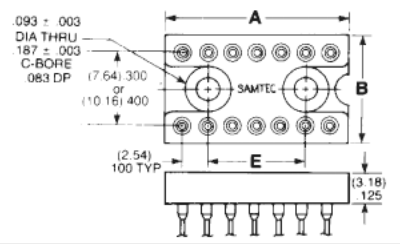
**-320** = .300 Row 20 Contacts

**-324** = .300 Row 24 Contacts

**-422** = .400 Row 22 Contacts

**-424** = .400 Row 24 Contacts

| Part No.      | A Length      | B Width      | E Mnt Holes  |
|---------------|---------------|--------------|--------------|
| IC or ICS-314 | (17.78) .700  | (10.16) .400 | (10.16) .400 |
| IC or ICS-316 | (20.32) .800  | (10.16) .400 | (12.70) .500 |
| IC or ICS-318 | (22.86) .900  | (10.16) .400 | (15.24) .600 |
| IC or ICS-320 | (25.40) 1.000 | (10.16) .400 | (17.78) .700 |
| IC or ICS-324 | (30.48) 1.200 | (10.16) .400 | (22.86) .900 |
| IC or ICS-422 | (27.94) 1.100 | (10.16) .400 | (20.32) .800 |
| IC-424        | (30.48) 1.200 | (12.70) .500 | (22.86) .900 |



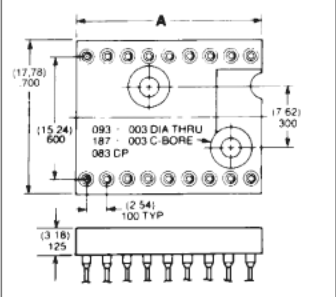
**-610** = .600 Row 10 Contacts

**-614** = .600 Row 14 Contacts

**-616** = .600 Row 16 Contacts

**-618** = .600 Row 18 Contacts

| Part No. | A Length     |
|----------|--------------|
| IC-610   | (12.70) .500 |
| IC-614   | (17.78) .700 |
| IC-616   | (20.32) .800 |
| IC-618   | (22.86) .900 |



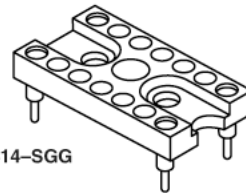
Due to technical progress, all designs, specifications and components are subject to change without notice.

**WWW.SAMTEC.COM**



**MOLD-TO-POSITION PRODUCT**

Minimums or set-up charges may apply. Call Samtec.



CO-314-SGG

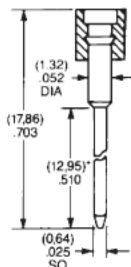
**LEAD STYLE**

**PLATING OPTION**

**OPTION**  
(Leave Blank for Standard Version)

**-W**

= Wire-Wrap  
For LIF Specify -ZW



Shorter w/w tail lengths available. See OPTION.

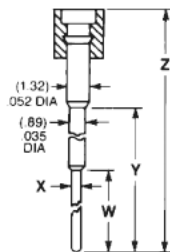
Insertion Depth = .125" to .170"  
Style W Component Part No. = SC-1W1(1)  
Style ZW Component Part No. = EZ-1W1(1)  
Style W-2 Component Part No. = SC-1W1(2)  
Style ZW-2 Component Part No. = EZ-1W1(2)  
Style W-3 Component Part No. = SC-1W1(3)  
Style ZW-3 Component Part No. = EZ-1W1(3)

**-E or -H**

= Elevated  
For LIF Specify -ZE or -ZH

| LEAD STYLE | X DIA       | W TAIL      | Y            | Z            |
|------------|-------------|-------------|--------------|--------------|
| -E or -ZE  | (0.51) .020 | (4.32) .170 | (8.86) .349  | (13.77) .543 |
| -H or -ZH  | (0.46) .018 | (3.81) .150 | (12.95) .510 | (17.86) .703 |

Insertion Depth = .125" to .175"  
Style E Component Part No. = SC-2P3  
Style ZE Component Part No. = EZ-2P3  
Style H Component Part No. = SC-2P2  
Style ZH Component Part No. = EZ-2P2



**GG**

= 30µ" Gold Contact  
10µ" Gold Shell

**GT**

= 30µ" Gold Contact  
Tin Shell

**TT**

= Tin Contact and Shell  
(-S, -ZS, -W, -ZW, -A, -H only)

**ST**

= 10µ" Gold Contact  
Tin Shell  
(-S & -ZS only)

**-2**

= (9.14) .360  
Wire-Wrap  
Tail

**Wire-Wrap Option**

Requires Style -W or -ZW

**-3**

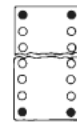
= (6.60) .260  
Wire-Wrap  
Tail

Specify desired suffix for shorter Wire-Wrap tail.

**-L**

= Locking  
Socket

Requires Style -S or -ZS and .035"±.003" board hole.



-624 = .600 Row / 24 Contacts

-628 = .600 Row / 28 Contacts

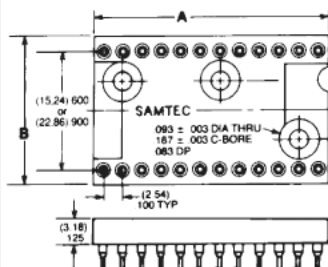
-632 = .600 Row / 32 Contacts

-640 = .600 Row / 40 Contacts

-940 = .900 Row / 40 Contacts

-950 = .900 Row / 50 Contacts

-964 = .900 Row / 64 Contacts



| Part No.      | A Length      | B Width       |
|---------------|---------------|---------------|
| IC or ICS-624 | (30.48) 1.200 | (17.78) .700  |
| IC or ICS-628 | (35.56) 1.400 | (17.78) .700  |
| IC or ICS-632 | (40.64) 1.600 | (17.78) .700  |
| IC or ICS-640 | (50.80) 2.000 | (17.78) .700  |
| *IC-940       | (63.50) 2.500 | (26.27) 1.050 |
| *IC-950       | (63.50) 2.500 | (26.27) 1.050 |
| IC-964        | (81.28) 3.200 | (26.27) 1.050 |

\*IC-940 and IC-950 are non-standard non-returnable.

†Mounting hole off center on 50 positions

**CRYSTAL OSCILLATOR CO SERIES**

**SPECIFY PART NUMBER FROM CHART BELOW**

**OPTION**  
(Leave Blank for Standard Version)

| Part Number | Termination Suffix* |      | Number of Contacts | Contact Finish | Shell Finish |
|-------------|---------------------|------|--------------------|----------------|--------------|
|             | P.C.                | W/W  |                    |                |              |
| CO-314      | -SGG                | -WGG | 4                  | Gold Gold Tin  | Gold Tin Tin |
|             | -SGT                | -WGT |                    |                |              |
|             | -STT                | -WTT |                    |                |              |
| CO-316      | -SGG                | -WGG | 4                  | Gold Gold Tin  | Gold Tin Tin |
|             | -SGT                | -WGT |                    |                |              |
|             | -STT                | -WTT |                    |                |              |
| CO-624      | -SGG                | -WGG | 4                  | Gold Gold Tin  | Gold Tin Tin |
|             | -SGT                | -WGT |                    |                |              |
|             | -STT                | -WTT |                    |                |              |

**-2**

= (9.14) .360  
Wire-Wrap  
Tail

**Wire-Wrap Option**

Requires Style -W or -ZW

**-3**

= (6.60) .260  
Wire-Wrap  
Tail

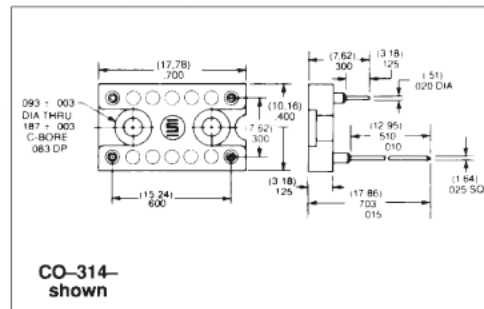
Specify desired suffix for shorter Wire-Wrap tail.

**Crystal Oscillator**

Accepts any component leads from .015" to .022" diameter. Low profile with precision machined lead sockets for high retention and reliability.

**Specifications: CO**

Same as IC Series.



CO-314-shown

Due to technical progress, all designs, specifications and components are subject to change without notice.

**WWW.SAMTEC.COM**