

Cable Gland, Polyamide

Material:

Body: Polyamide 6

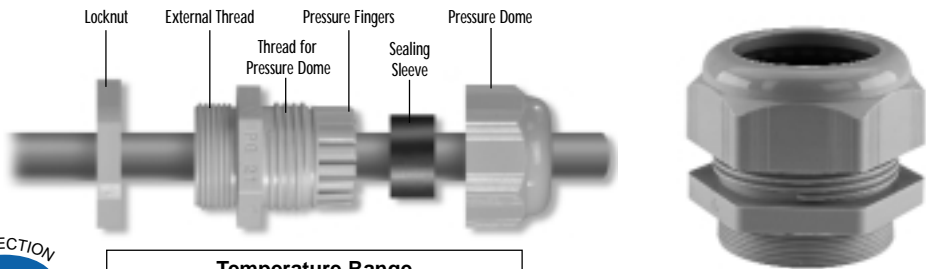
Seal: Neoprene

Technical properties:

- Maximum strain relief through clamping range
- IP 68 achieved without seal rings
- Trapezoidal thread with high torque guarantees tight and permanent fit of the dome nut
- Gas and water-tight

Application field:

- Machines and devices



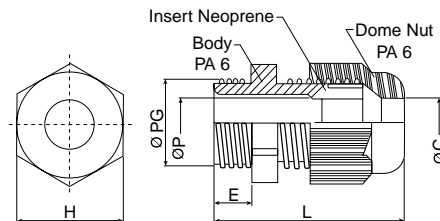
Temperature Range	
PA6	Neoprene
-40 to 100° C (-40 to 212° F)	-25 to 100° C (-13 to 212° F)



PG Thread

Outer thread	Clamping range mm	Cat. No. Light Grey	Cat. No. Black	Std. Pk.
PG 7	1.5-5	5309107	5309207	100
PG 7	2.5-6.5	5308707	5308507	100
PG 9	1.5-6	5309109	5309209	50
PG 9	2.5-8	5308709	5308509	50
PG 11	2-7	5309111	5309211	50
PG 11	3.5-10	5308711	5308511	50
PG 13.5	3-9	5309113	5309213	50
PG 13.5	5-12	5308713	5308513	50
PG 16	5-12	5309116	5309216	50
PG 16	7-14	5308716	5308516	50
PG 21	7-16	5309121	5309221	25
PG 21	9-18	5308721	5308521	25
PG 29	11-21	5309129	5309229	20
PG 29	14-25	5308729	5308529	20
PG 36	13-26	5309136	5309236	10
PG 36	18-32	5308736	5308536	10
PG 42	17-31	5309142	5309242	5
PG 42	24-38.5	5308737	5308537	5
PG 48	26-39	5309148	5309248	5
PG 48	35-48	5308738	5308538	5

Thread Size	H mm	PG Dimensions					
		E mm	L mm	ØC mm	ØP mm	ØPG mm	
PG7	15	8	32	6.7	6.8	12.5	
PG9	19	8	35	8.5	8.7	15.2	
PG11	22	8	37	10.5	10.5	18.6	
PG13.5	24	9	39	12.5	12.5	20.4	
PG16	27	10	43	14.5	14.5	22.5	
PG21	33	11	50	18.5	18.5	28.3	
PG29	42	11	53	25.5	25.5	37.0	
PG36	53	13	65	32.5	32.5	47.0	
PG42	60	13	68	39.0	39.0	54.0	
PG48	70	14	70	48.5	48.5	59.3	



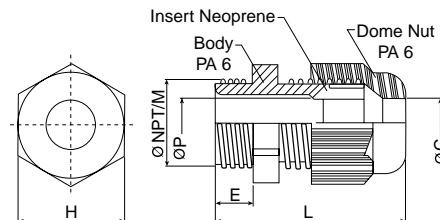
NPT Thread

NPT	Clamping range mm	Cat. No.	Cat. No.	Std. Pk.
NPT 3/8"	1.5-6	5308904	5308924	50
NPT 3/8"	2.5-8	5308900	5308920	50
NPT 1/2"	3-9	5308905	5308925	50
NPT 1/2"	5-12	5308901	5308921	50
NPT 3/4"	7-16	5308906	5308926	20
NPT 3/4"	9-18	5308902	5308922	20
NPT 1"	11-21	5308907	5308927	20
NPT 1"	14-25	5308903	5308923	20

Thread Size	H mm	Metric/NPT Dimensions					
		E mm	L mm	ØC mm	ØP mm	ØNPT/M mm	
NPT 3/8"	19	11	38	8.5	8.7	17.1	
NPT 1/2"	24	14	44	12.5	12.5	21.2	
NPT 3/4"	33	15	54	18.5	18.5	26.7	
NPT 1"	42	18	60	25.5	25.5	33.3	
M12	15	8	32	6.7	6.8	12.0	
M16	22	10	39	10.5	10.5	16.0	
M20	27	10	43	14.5	14.5	20.0	
M25	33	10	49	18.5	18.5	25.0	
M32	42	10	52	25.5	25.5	32.0	
M40	53	10	62	32.5	32.5	40.0	
M50	60	12	67	39.0	39.0	50.0	
M63	70	12	68	48.5	48.5	63.0	

Metric Thread*

Metric	Clamping range mm	Cat. No.	Cat. No.	Std. Pk.
M 12 x 1.5	1.5-5	5309612	5309712	100
M 12 x 1.5	2.5-6.5	5308950	5308940	100
M 16 x 1.5	2-7	5309616	5309716	50
M 16 x 1.5	2.5-8	5308958	5308948	50
M 16 x 1.5	3.5-10	5308951	5308941	50
M 20 x 1.5	5-12	5309620	5309720	50
M 20 x 1.5	5-12	5308959	5308949	50
M 20 x 1.5	7-14	5308952	5308942	50
M 25 x 1.5	7-16	5309625	5309725	25
M 25 x 1.5	7-14	5308960	5308962	50
M 25 x 1.5	9-18	5308953	5308943	25
M 32 x 1.5	11-21	5309632	5309732	20
M 32 x 1.5	14-25	5308954	5308944	20
M 40 x 1.5	13-26	5309640	5309740	10
M 40 x 1.5	18-32	5308955	5308945	10
M 50 x 1.5	17-31	5309650	5309750	5
M 50 x 1.5	24-38.5	5308956	5308946	5
M 63 x 1.5	26-39	5309663	5309763	5
M 63 x 1.5	35-48	5308957	5308947	5



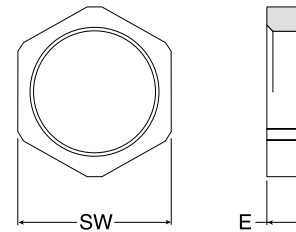
* Extended Thread available consult Altech

Lock Nuts, Polyamide

Material:
Polyamide 6
25 % Glass fiber Reinforced

Characteristic feature:
PG / metric and NPT thread

Temperature Range PA
-30 to 120° C (-22 to 248° F)



Thread	Thickness (E) mm	SW mm	Cat. No. Light grey	Cat. No. Black	Std. Pk.
PG (DIN 46 320)					
PG 7	5	19	7211881	7211851	50
PG 9	5	22	7211882	7211852	50
PG 11	5	24	7211883	7211853	50
PG 13.5	6	27	7211884	7211854	50
PG 16	6	30	7211885	7211855	50
PG 21	6.5	36	7211886	7211856	20
PG 29	7.5	46	7211887	7211857	20
PG 36	8	60	7211888	7211858	10
PG 42	9	65	7211889	7211859	5
PG 48	9.5	70	7211890	7211860	5
Metric					
M 12 x 1.5	5	19	7211979	7211974	50
M 16 x 1.5	5	22	7211980	7211975	50
M 20 x 1.5	5	24	7211981	7211976	50
M 25 x 1.5	6	30	7211982	7211977	50
M 32 x 1.5	7.5	38	7211983	7211978	50
M 40 x 1.5	8	50	7211984	7211990	20
M 50 x 1.5	9	60	7211985	7211991	10
M 63 x 1.5	10	75	7211986	7211992	5
NPT					
NPT 3/8"	5	22	7211485	7211495	50
NPT 1/2"	6	27	7211486	7211496	20
NPT 3/4"	7	36	7211487	7211497	20
NPT 1"	7	41	7211488	7211498	20

Material:
Nickel-plated brass

Characteristic feature:
PG and Metric thread

Applications:
EMC applications



Temperature Range MS
-40 to 300° C (-40 to 572° F)

Thread	Thickness (E) mm	SW mm	Cat. No.	Std. Pk.
PG				
PG 7	2.9	15	6011007	50
PG 9	2.9	18	6011009	50
PG 11	3.1	21	6011011	50
PG 13.5	3.1	23	6011013	50
PG 16	3.1	26	6011016	50
PG 21	3.6	32	6011021	20
PG 29	4.1	41	6011029	20
PG 36	5.1	51	6011036	10
PG 42	5.1	60	6011042	10
PG 48	5.6	64	6011048	10
Metric				
M 12 x 1.5	3	15	6011112	50
M 16 x 1.5	3	20	6011116	50
M 20 x 1.5	3.5	24	6011120	50
M 25 x 1.5	3.5	30	6011125	25
M 32 x 1.5	4.5	35	6011132	20
M 40 x 1.5	4.5	45	6011140	10
M 50 x 1.5	5.5	55	6011150	10
M 63 x 1.5	6	70	6011163	10

