

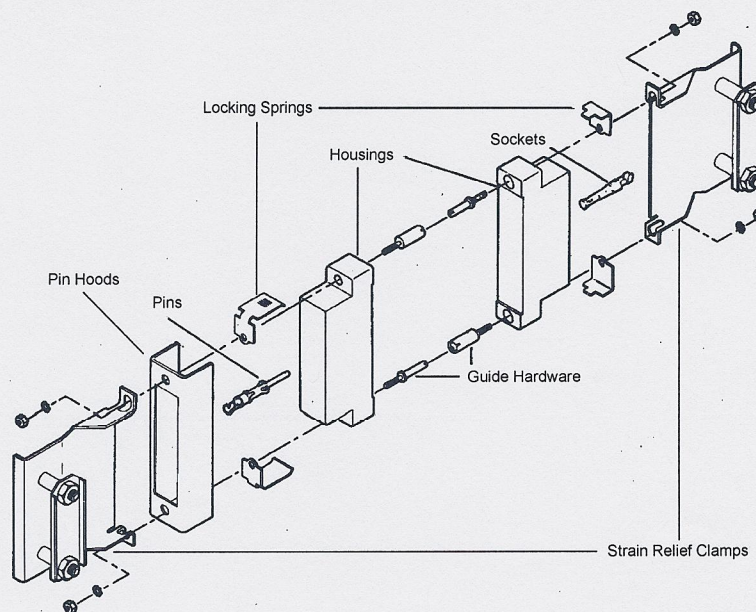
Cable-to-Cable

Application

A

Featured Hardware

- Strain Relief Clamps
- Locking Springs
- Pin Hoods
- Guide Hardware



Component Description		Number of Positions				
		6	14	20	26	34
STANDARD HOUSINGS Pages 44 to 51	Plug Block	202758-1	201355-1	201356-1	201359-1	1-201357-1
	Receptacle Block	202757-1	201298-1	200346-2	200512-2	200838-2
	Plug Block	202758-3	—	201356-3	201359-3	201357-3
	Receptacle Block	202757-3	201298-3	200346-4	200512-3	200838-3
	Plug Block	—	—	—	—	2013800-1
	Receptacle Block	—	—	—	—	200802-1
STRAIN RELIEF CLAMPS Page 88	Long	—	201843-1	—	201845-1	201846-1
	Short	203432-1	200686-1	—	201229-1	—
	Long	—	—	—	—	—
	Short	—	—	201237-1	—	201224-1
GUIDE HARDWARE Page 81	Center Male	200389-2	200389-2	200389-2	200389-2	200389-2
	Center Female	200390-2	200390-2	200390-2	200390-2	200390-2
	Corner Male	—	—	—	—	200833-2
	Corner Female	—	—	—	—	200835-2
	—	—	—	—	—	—
LOCKING SPRINGS¹ Page 80	Male—Nickel Plated Spring Steel	201921-1	201921-1	201921-1	201923-1	201925-1
	Female—Stainless Steel	201922-1	201922-1	201922-1	201918-1 (Single Spring)	201926-1
PIN HOODS Pages 82 and 83	Internal Open End	204258-6	201363-4	—	201785-4	201786-4
	Internal Closed End	—	—	—	—	—
	External Closed End	—	—	—	—	—
	External Closed End	—	—	—	—	—

¹Each part number contains two locking springs. Order one male and one female for each mated pair of connectors.

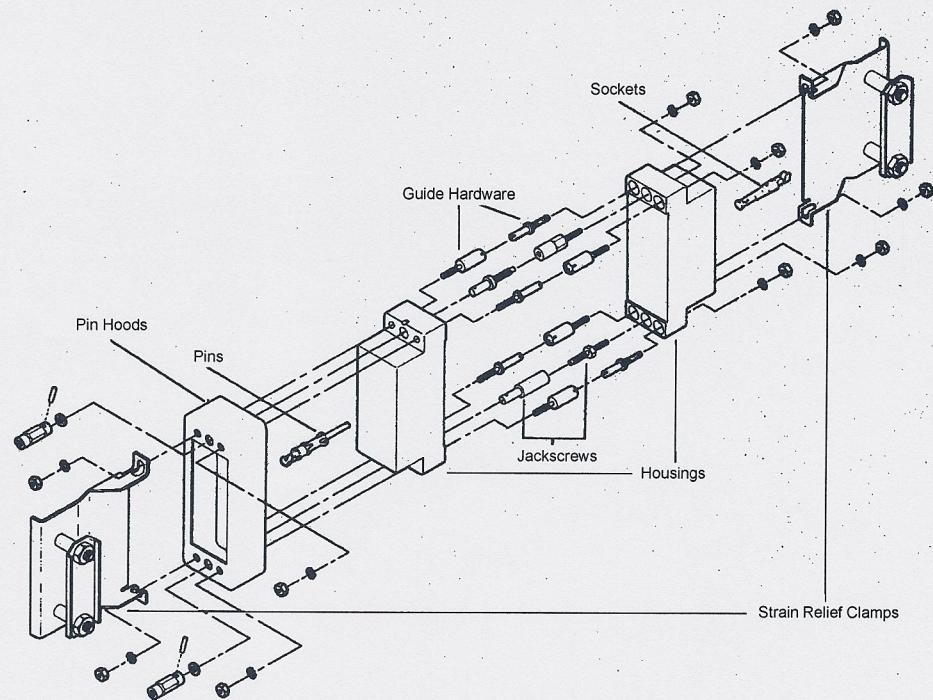
Cable-to-Cable (Continued)

Application

B

Featured Hardware

- Strain Relief Clamps
- Pin Hoods
- Jackscrews
- Guide Hardware

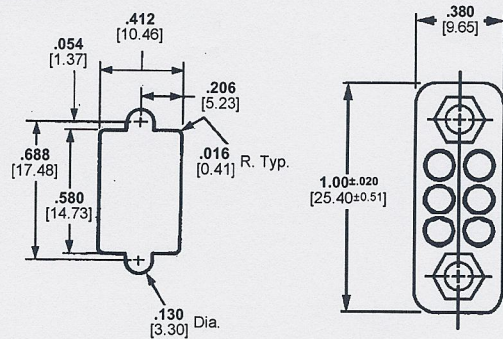


Component Description		Number of Positions				
		6	14	20	26	34
STANDARD HOUSINGS Pages 44 to 51	Plug Block	202758-1	201355-1	201356-1	201359-1	1-201357-1
	Receptacle Block	202757-1	201298-1	200346-2	200512-2	200838-2
	Plug Block	202758-3	—	201356-3	201359-3	201357-3
	Receptacle Block	202757-3	201298-3	200346-4	200512-3	200838-3
	Plug Block	—	—	—	—	213800-1
STRAIN RELIEF CLAMPS Page 88	Long	—	201843-1	—	201845-1	201846-1
	Short	203432-1	200686-1	—	201229-1	—
	Long	—	—	201237-1	—	201224-1
	Short	—	—	—	—	—
	Fixed Male	201092-1	201092-1	201092-1	201092-1	201092-1
JACKSCREWS¹ Pages 78 and 79	Fixed Female	201089-1	201089-1	201089-1	201089-1	201089-1
	Long-Long Male	—	—	—	—	—
	Long-Long Female	—	—	—	—	—
	Long Male	—	—	—	—	—
	Long Female	—	—	—	—	—
	Short-Short Male	201827-1	201827-1	201827-1	201827-1	201827-1
	Short-Short Female	201828-1	201828-1	201828-1	201828-1	201828-1
GUIDE HARDWARE Page 81	Center Male	—	—	—	—	—
	Center Female	—	—	—	—	—
	Corner Male	—	—	—	—	200833-2
	Corner Female	—	—	—	—	200835-2
	Internal Open End	204258-6	201363-4	—	201785-4	201786-4
PIN HOODS Pages 82 and 83	Internal Closed End	—	—	—	—	202434-4
	External Closed End	—	—	—	201349-2	201350-2
	External Closed End	—	—	—	—	—
	External Closed End	—	—	—	—	—

¹Listed Jackscrews have 6-32 single lead threads. For corresponding Jackscrews with 6-32 double lead threads, refer to pages 78 and 79.

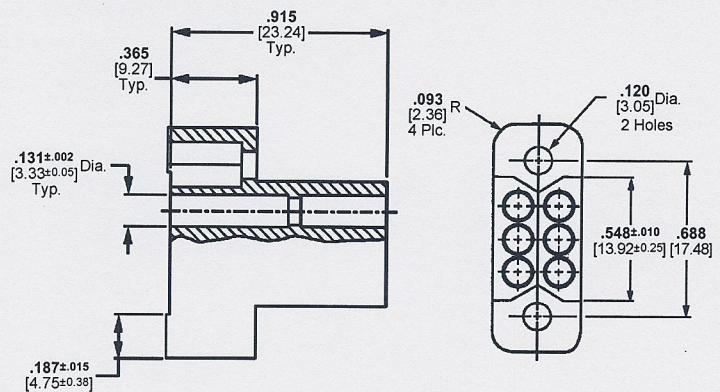
Standard Housings (Continued)

6 Position



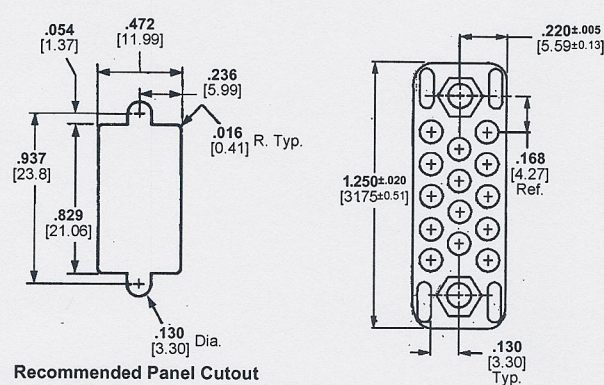
Recommended Panel Cutout

Plug Housing
Phenolic Part No. 202758-1
Diallyl Phthalate Part No. 202758-3



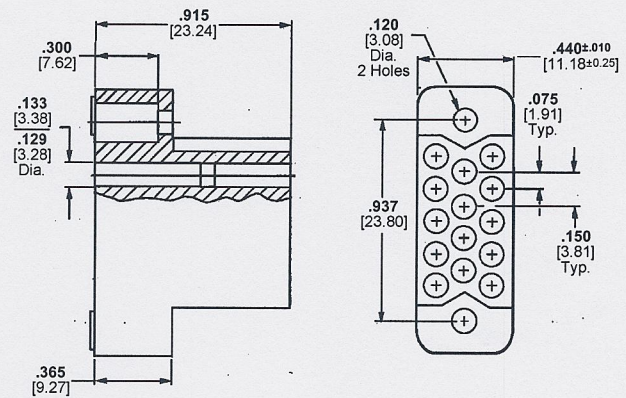
Receptacle Housing
Phenolic Part No. 202757-1
Diallyl Phthalate Part No. 202757-3

14 Position



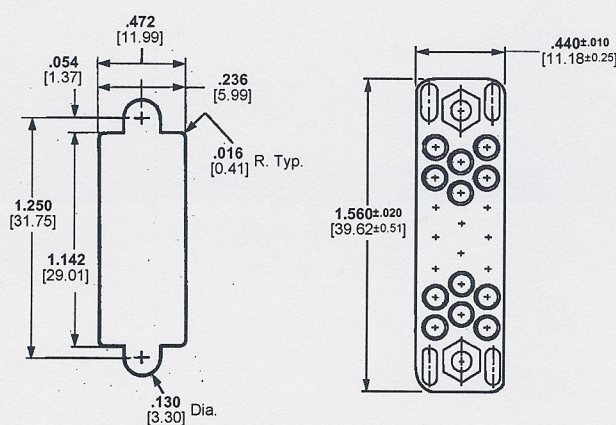
Recommended Panel Cutout

Plug Housing
Phenolic Part No. 201355-1



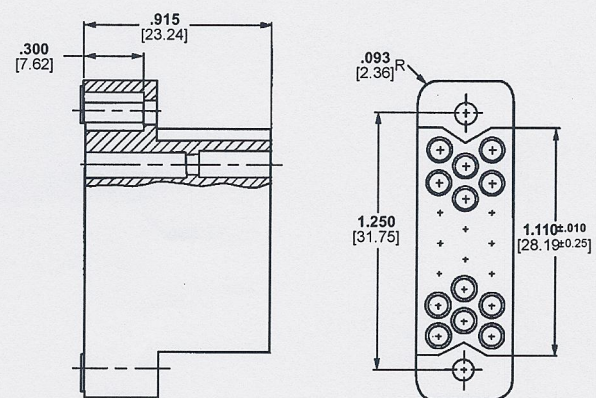
Receptacle Housing
Phenolic Part No. 201298-1
Diallyl Phthalate Part No. 201298-3

20 Position



Recommended Panel Cutout

Plug Housing
Phenolic Part No. 201356-1
Diallyl Phthalate Part No. 201356-3



Receptacle Housing
Phenolic Part No. 200346-2
Diallyl Phthalate Part No. 200346-4

- Notes:
1. All housings accept Type II, Type III+, and Subminiature COAXICON contacts.
 2. Pins and/or sockets may be used in any housing.
 3. Dimensions are $\pm .005$ [0.127].
 4. Housing cavity identification are mirror image.