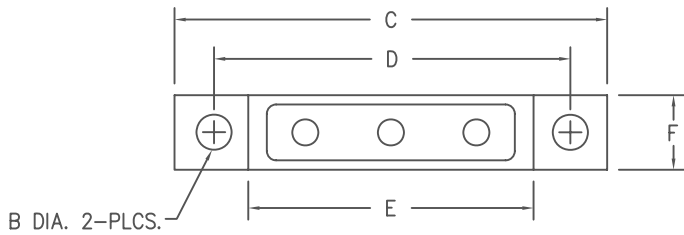
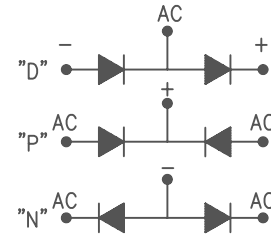
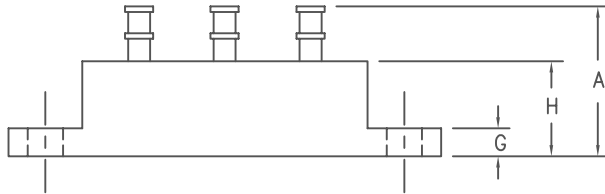


Center Tap & Doubler Assemblies Ultrafast Recovery 804 Series



Dim.	Inches	Millimeter
A	.660 MAX.	16.76 MAX.
B	.165-.175 DIA.	4.19-4.45 DIA.
C	2.240-2.260	56.90-57.40
D	1.870-1.880	47.50-47.75
E	1.470-1.490	37.34-37.85
F	.334-.354	8.48-8.99
G	.115-.135	2.92-3.43
H	.302-.322	7.67-8.18



MARKING:

Alternating Current Input: AC
Cathode Positive Output: +
Anode Negative: -
Part Number is printed on the body

NOTES:

Add suffix P, N or D for terminal configuration P, N or D
For example, for center tap configuration P order 804-IP

Microsemi Catalog Number	Repetitive Peak Reverse Voltage V _{RRM}
804-1	50V
804-2	100V
804-3	125V
804-4	150V

- Current ratings to 20A
- V_{RRM} to 150V
- Only fused-in-glass diodes used
- 150°C junction temperature
- Surge ratings to 250A
- Recovery times to 50nS
- Electrically isolated Aluminum case
- MIL-PRF-19500 Similarity
- Sn/Pb terminations

Electrical Characteristics

Maximum DC output current—T _C = 55°C	I _O	804 20A
Maximum DC output current—T _C = 100°C	I _O	14A
Maximum surge current—T _C = 100°C	I _{FSM}	250A
Max peak forward voltage per leg @ 25°C	V _{FM}	.95V @ 10A*
Max peak reverse current @ 25°C, at V _{rrm}	I _{RM}	10uA
Max peak reverse current @ 100°C, at V _{rrm}	I _{RM}	500uA
Max. recovery time 1A, 1A, 0.5A	t _{rr}	50nS

*Pulse test: Pulse width 300 μsec, Duty cycle 2%

Thermal and Mechanical Characteristics

Storage temperature range	T _{STG}	-65°C to 150°C
Operating temperature range	T _J	-65°C to 150°C
Max.thermal resistance	R _{θJC}	6.0°C/W
Max. thermal resistance junction to ambient	R _{θJA}	20°C/W
Weight—typical		10 grams



8700 East Thomas Road, P.O. Box 1390
Scottsdale, AZ 85252
PH: (480) 941-6300
FAX: (480) 947-1503
www.microsemi.com

06-01-07 Rev. 3

Figure 1
Typical Forward Characteristics – Per Leg

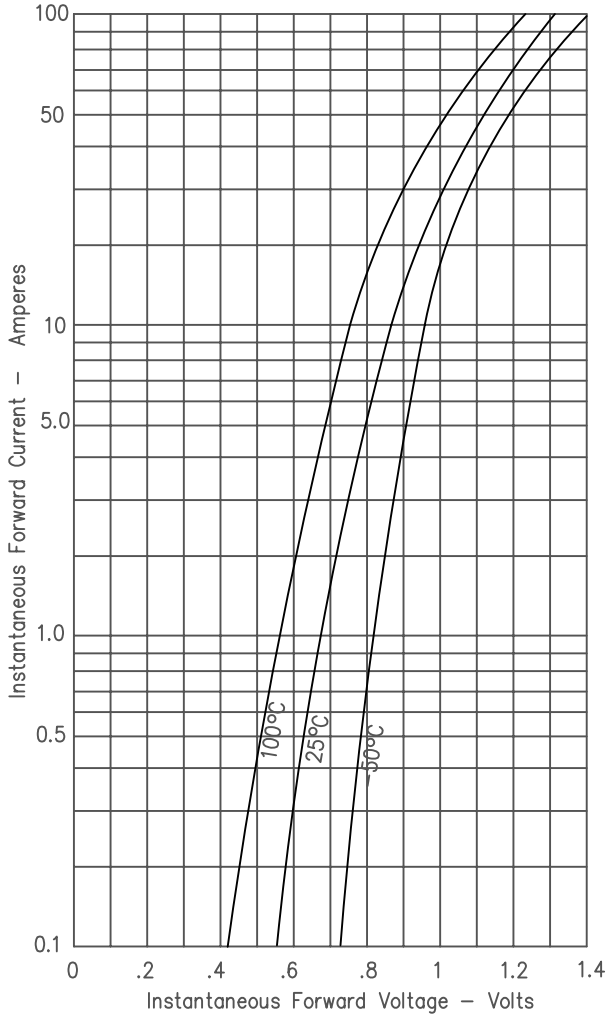


Figure 3
Current Derating

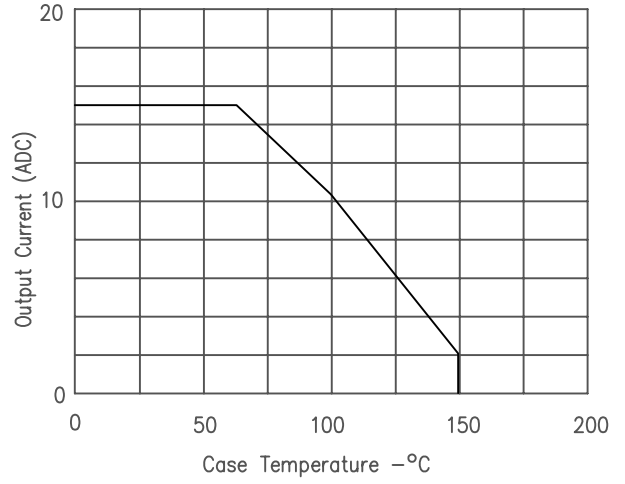


Figure 2
Typical Reverse Leakage Current – Per Leg

