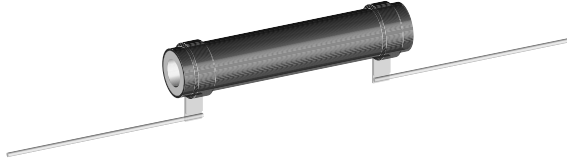


Wirewound Resistors, Industrial Power, Tubular



FEATURES

- High temperature silicon coating
- Complete welded construction
- High thermal capacity for intermittent or short duration
- Available in non-inductive styles (model NHLW) with Aryton-Perry winding for lowest reactive components
- Axial or radial terminals for through hole or lead weld applications
- Excellent stability in operation

STANDARD ELECTRICAL SPECIFICATIONS

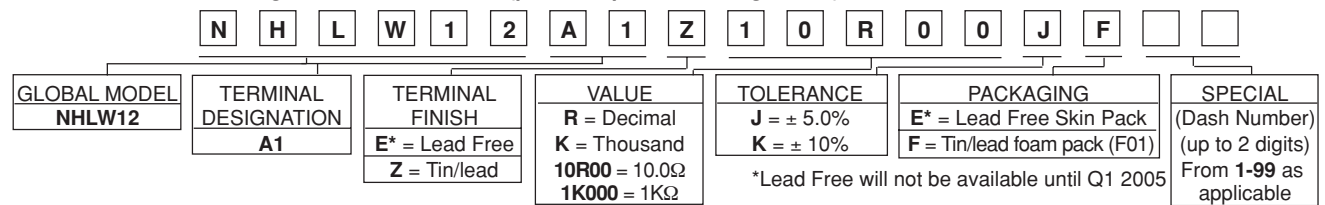
GLOBAL MODEL	HISTORICAL MODEL	POWER RATING $P_{25^{\circ}\text{C}}$ W	RESISTANCE RANGE Ω		WEIGHT (Typical) g
			$\pm 5\%$	$\pm 10\%$	
HLW03 NHLW03	HLW-3 NHLW-3	3	1.0 - 6K 1.0 - 700	0.10 - 6K 1.0 - 700	1.16
HLW05 NHLW05	HLW-5 NHLW-5	5.25	1.0 - 15k 1.0 - 1.9k	0.10 - 15K 1.0 - 1.9K	2.12
HLW06 NHLW06	HLW-6 NHLW-6	8	1.0 - 20.5k 1.0 - 2.7k	0.10 - 20.5K 1.0 - 2.7K	4.60
HLW10 NHLW10	HLW-10 NHLW-10	10	1.0 - 29k 1.0 - 3.7k	0.10 - 29K 1.0 - 3.7K	6.24
HLW12 NHLW12	HLW-12 NHLW-12	12	1.0 - 58k 1.0 - 3.9k	0.10 - 58K 1.0 - 3.9K	6.60
HLW15 NHLW15	HLW-15 NHLW-15	15	1.0 - 60k 1.0 - 4.3k	0.10 - 58K 1.0 - 4.3K	8.82
HLW20 NHLW20	HLW-20 NHLW-20	20	1.0 - 95k 1.0 - 6.8k	0.10 - 95K 1.0 - 6.8K	11.36

TECHNICAL SPECIFICATIONS

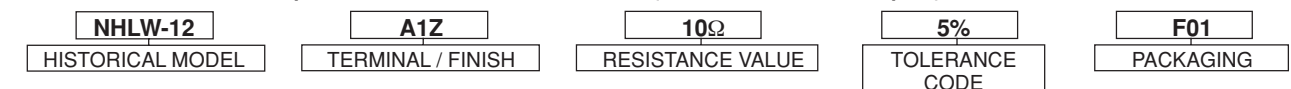
PARAMETER	UNIT	HLW RESISTOR CHARACTERISTICS
Temperature Coefficient	ppm/ $^{\circ}\text{C}$	± 90 for 0.1 Ω to 0.99 Ω ; ± 50 for 1 Ω to 9.9 Ω ; ± 30 for 10 Ω and above
Dielectric Withstanding Voltage	V_{AC}	1000, from terminal to mounting hardware
Short Time Overload	-	10 x rated power for 5 seconds
Maximum Working Voltage	V	$(P \times R)^{1/2}$
Insulation Resistance	Ω	1000 Megohm minimum dry, 100 Megohm minimum after moisture test
Operating Temperature Range	$^{\circ}\text{C}$	- 55 / + 350

GLOBAL PART NUMBER INFORMATION

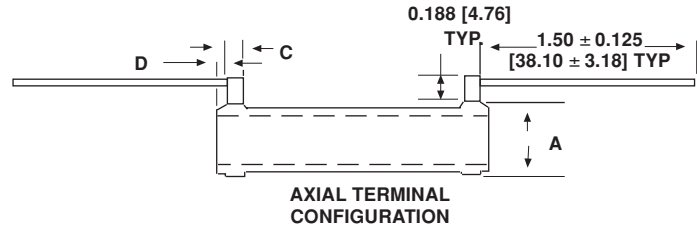
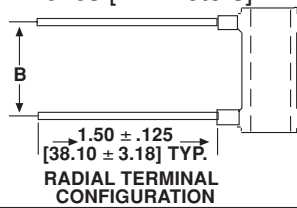
New Global Part Numbering: NHLW12A1Z10R00JF (preferred part numbering format)



Historical Part Number example: NHLW-12-A1Z 10 Ω 5% F01 (will continue to be accepted)



DIMENSIONS in inches [millimeters]



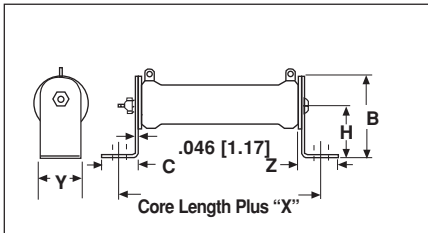
GLOBAL MODEL	A (Max.)	B Typical	C ± 0.031 [0.79]	D Typical	CORE DIMENSIONS			AXIAL TERMINAL DESIGNATION	RADIAL TERMINAL DESIGNATION	MOUNTING HARDWARE
					LENGTH ± 0.063 [1.59]	O.D.	I.D. ± 0.031 [0.79]			
HLW03	0.297 [7.54]	0.282 [7.16]	0.063 [1.59]	0.047 [1.19]	0.438 [11.11]	0.203 [5.16]	0.125 [3.18]	A2Z	R2Z	-
HLW05	0.344 [8.73]	0.469 [11.91]	0.063 [1.59]	0.047 [1.19]	0.625 [15.88]	0.250 [6.35]	0.125 [3.18]	A2Z	R2Z	-
HLW06	0.406 [10.32]	0.688 [17.48]	0.125 [3.18]	0.094 [2.38]	1.000 [25.40]	0.313 [7.94]	0.188 [4.76]	A1Z	R1Z	101, 204, 301
HLW10	0.563 [14.29]	0.688 [17.48]	0.125 [3.18]	0.094 [2.38]	1.000 [25.40]	0.438 [11.11]	0.313 [7.94]	A1Z	R1Z	101, 203, 301
HLW12	0.406 [10.32]	1.438 [36.53]	0.125 [3.18]	0.094 [2.38]	1.750 [44.45]	0.313 [7.94]	0.188 [4.76]	A1Z	R1Z	101, 204, 301
HLW15	0.563 [14.29]	1.188 [30.18]	0.125 [3.18]	0.094 [2.38]	1.500 [38.10]	0.438 [11.11]	0.313 [7.94]	A1Z	R1Z	101, 203, 301
HLW20	0.563 [14.29]	1.688 [42.88]	0.125 [3.18]	0.094 [2.38]	2.000 [50.80]	0.438 [11.11]	0.313 [7.94]	A1Z	R1Z	101, 203, 301

TERMINAL FINISH

Terminals are 20 AWG for HLW03 and HLW05 size and 18 AWG for all other sizes. "E" Finish - 100% Sn, coated Copperweld®. "Z" Finish - 60/40 Sn/Pb coated Copperweld®.

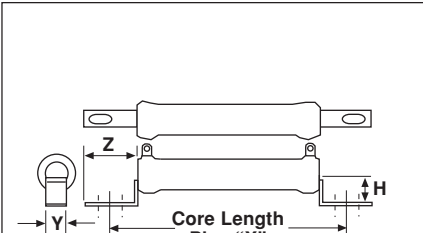
MOUNTING HARDWARE DIMENSIONS in inches [millimeters]

Horizontal Thru-Bolt



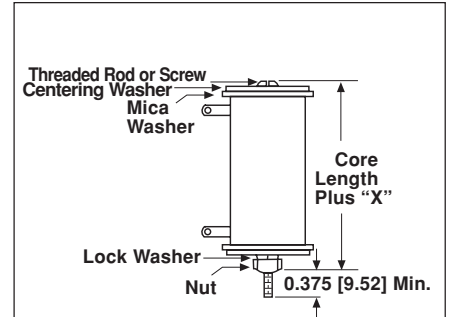
DIMENSION	BRACKET TYPE
	101
X	1.063 [26.99]
Y	0.500 [12.70]
Z	0.859 [21.83]
H	1.000 [25.40]
B	1.375 [34.93]
C	0.750 [19.05]
MOUNTING SLOT	0.219 x 0.438 [5.56] x [11.11]

Push-In



DIMENSION	BRACKET TYPE	
	203	204
X	0.625 [15.88]	0.375 [9.53]
H	0.672 [17.07]	0.281 [7.14]
Y	0.250 [6.35]	0.250 [6.35]
Z	0.469 [11.91]	0.344 [8.73]
HOLE (Dia)	0.161 [4.09]	0.144 [3.66]

Vertical Thru-Bolt



DIMENSION	BRACKET TYPE
	301
X (Approximate)	0.438 [11.11]
THREAD	8-32

MATERIAL SPECIFICATIONS

Element: Copper-nickel alloy or nickel-chrome alloy, depending on resistance value

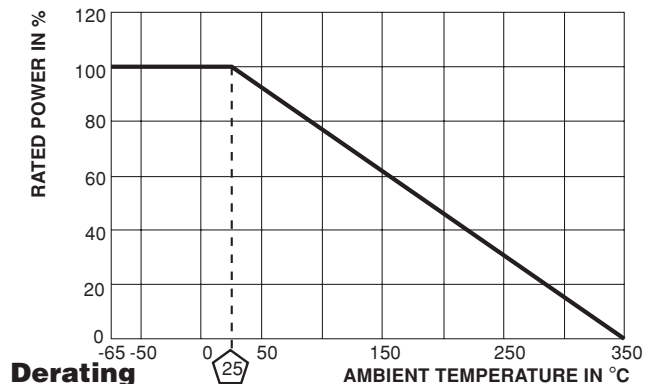
Core: Ceramic, steatite

Coating: Special high temperature silicone

Standard Terminals: Model "Z" terminals are tinned Copperweld®

Terminal Bands: Steel

Part Marking: DALE, Model, Wattage, Value, Tolerance, Date Code





Notice

Specifications of the products displayed herein are subject to change without notice. Vishay Intertechnology, Inc., or anyone on its behalf, assumes no responsibility or liability for any errors or inaccuracies.

Information contained herein is intended to provide a product description only. No license, express or implied, by estoppel or otherwise, to any intellectual property rights is granted by this document. Except as provided in Vishay's terms and conditions of sale for such products, Vishay assumes no liability whatsoever, and disclaims any express or implied warranty, relating to sale and/or use of Vishay products including liability or warranties relating to fitness for a particular purpose, merchantability, or infringement of any patent, copyright, or other intellectual property right.

The products shown herein are not designed for use in medical, life-saving, or life-sustaining applications. Customers using or selling these products for use in such applications do so at their own risk and agree to fully indemnify Vishay for any damages resulting from such improper use or sale.